

**Serie Light Space**

---

**GUARNIZIONI**  
*Weathersrips*

Serie Light Space

# GUARNIZIONI

scala 1:1

Rg 503



Guarnizione a palloncino con piedino rigido  
Materiale Durflex

Rg 504



Guarnizione a palloncino  
Materiale EPDM

Rg 505



Guarnizione a pinna interna  
Materiale EPDM

Rg 402

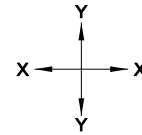
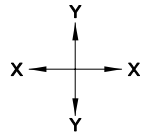


Guarnizione di battuta interna  
Materiale EPDM

---

**PROFILI**  
*profiles*

Serie Light Space



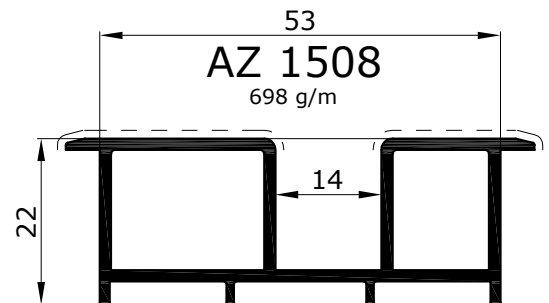
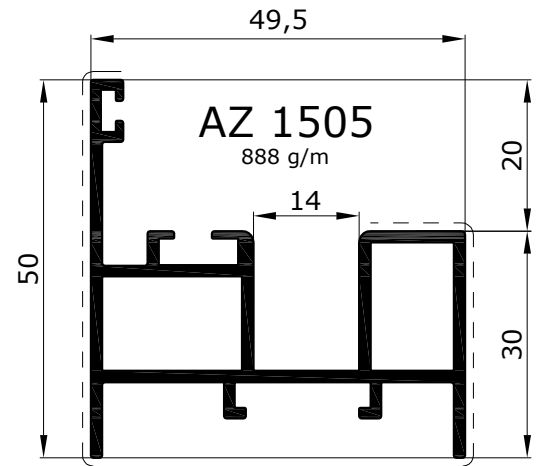
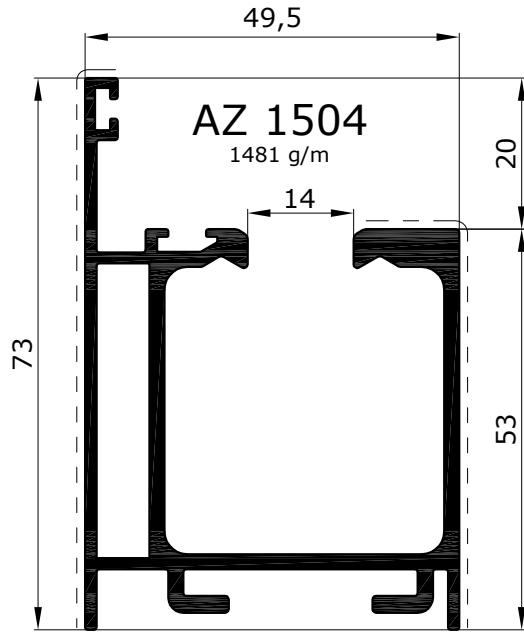
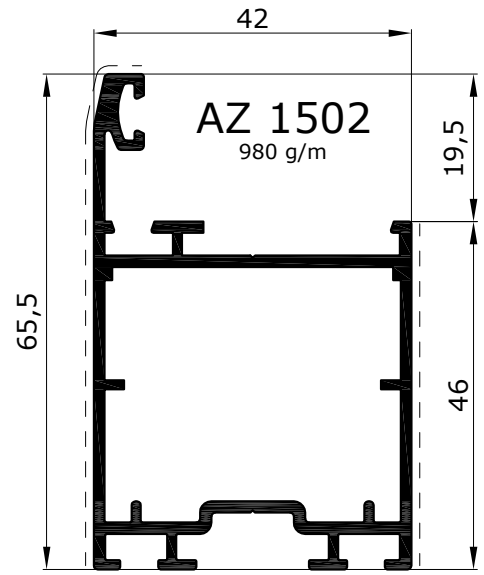
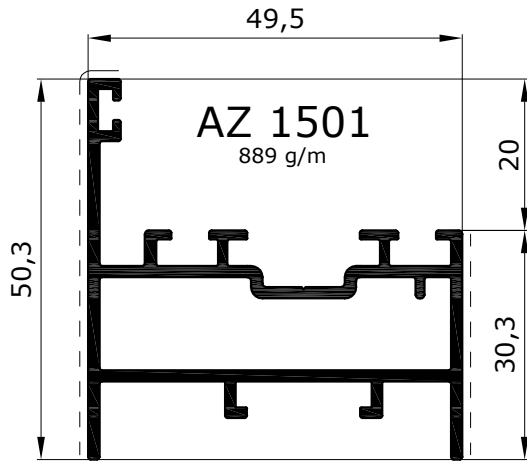
profilati scala ridotta

PROFILI	SIGLA Jx cm <sup>4</sup> Jy cm <sup>4</sup>	peso g/m	utilizzo	PROFILI	SIGLA Jx cm <sup>4</sup> Jy cm <sup>4</sup>	peso g/m	utilizzo
	<b>AZ 1501</b> Jx 10,65 Jy 4,09	889	Telaio		<b>AZ 2006</b>	254	Fermavetro Arrotondato - vuoto 24 mm -
	<b>AZ 1502</b> Jx 9,47 Jy 13,92	980	Anta		<b>AZ 2016</b>	290	Fermavetro Arrotondato - vuoto 11 mm -
	<b>AZ 1503</b> Jx 4,61 Jy 0,32	313	Compensatore		<b>AZ 2017</b>	270	Fermavetro Arrotondato - vuoto 18,5 mm
	<b>AZ 1504</b> Jx 19,43 Jy 21,82	1481	Guida superiore		<b>AZ 2050</b>	266	Fermavetro Dritto - vuoto 18,5 mm
	<b>AZ 1505</b> Jx 10,29 Jy 4,16	888	Guida inferiore		<b>AZ 2051</b>	294	Fermavetro Dritto - vuoto 11 mm -
	<b>AZ 1506</b> Jx 3,46 Jy 0,45	473	Profilo chiusura 3° anta		<b>AZ 2074</b>	260	Fermavetro Dritto - vuoto 24 mm -
	<b>AZ 1507</b>	242	Profilo riporto di battuta				
	<b>AZ 1508</b> Jx 8,73 Jy 1,47	698	Guida inferiore ribassata				

**PROFILATI**  
*Profiles*

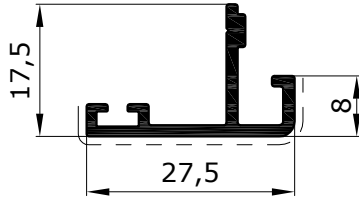
**Serie Light Space**

scala 1:1

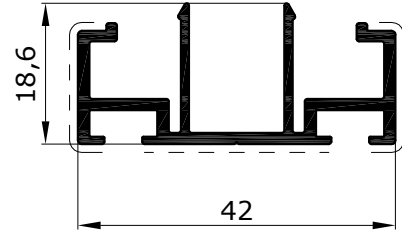


scala 1:1

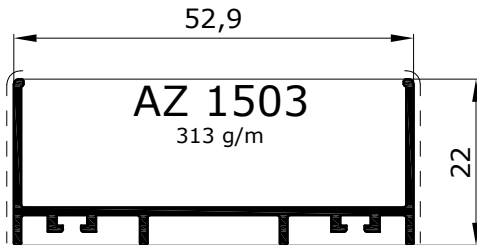
**AZ 1507**  
242 g/m



**AZ 1506**  
473 g/m

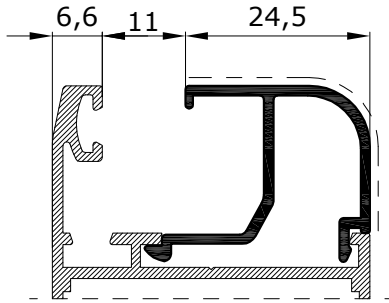


**AZ 1503**  
313 g/m

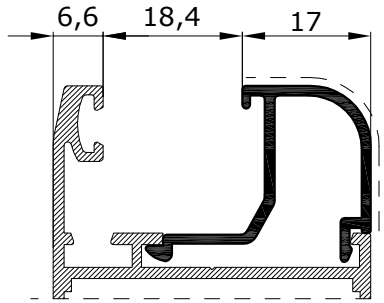




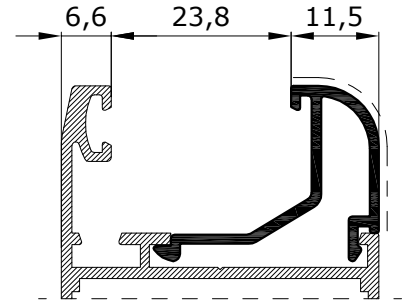
scala 1:1



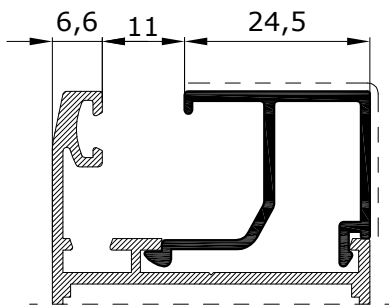
AZ 2016  
290 g/m



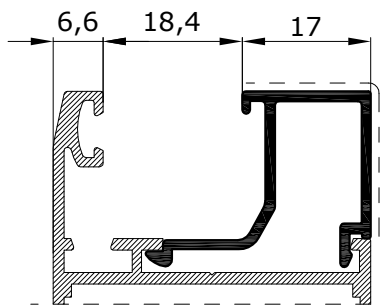
AZ 2017  
270 g/m



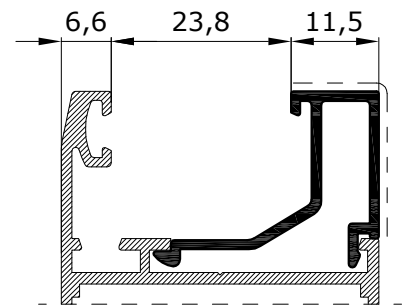
AZ 2006  
254 g/m



AZ 2051  
294 g/m



AZ 2050  
266 g/m



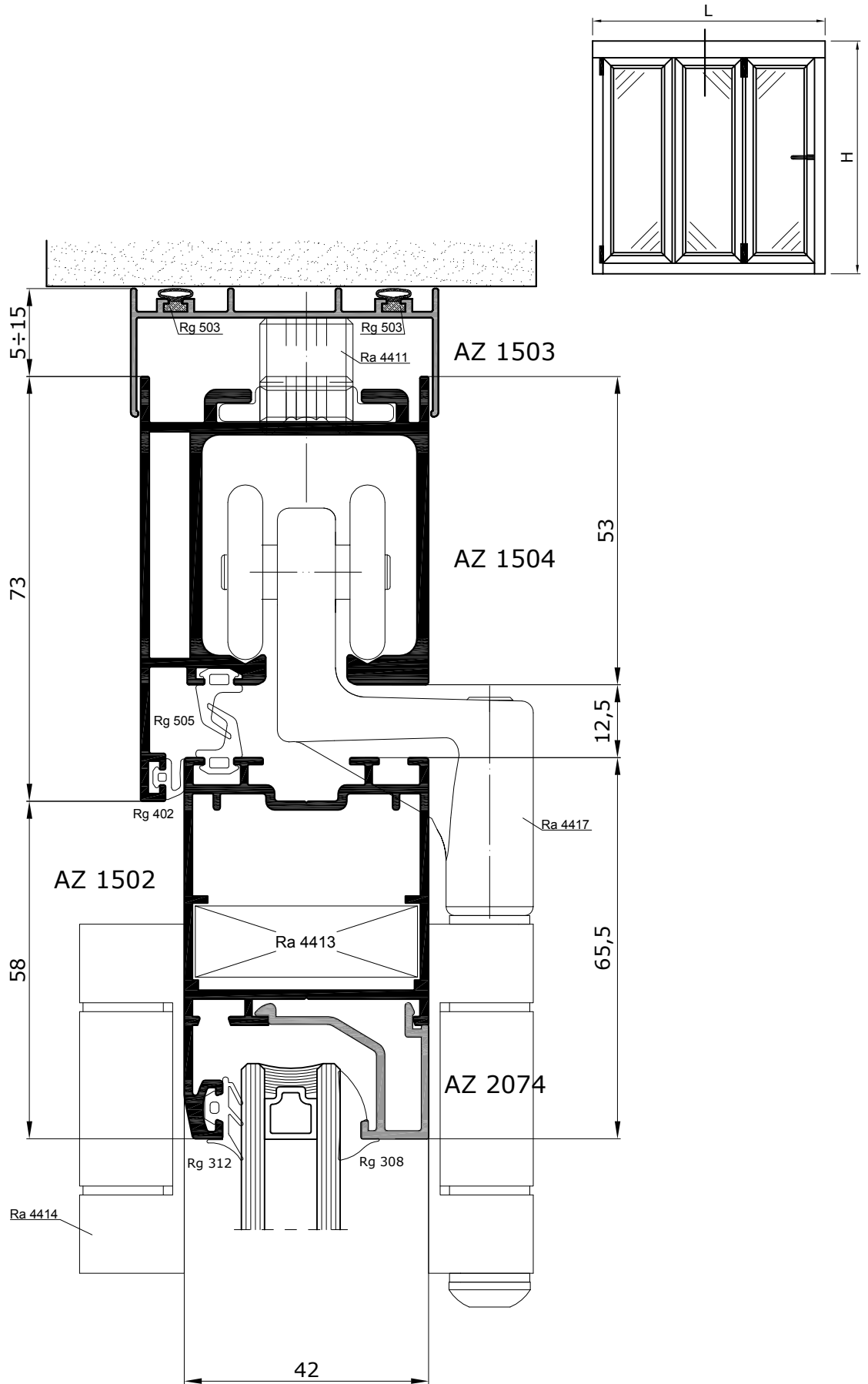
AZ 2074  
260 g/m

**SEZIONI**  
*Sections*

Serie Light Space

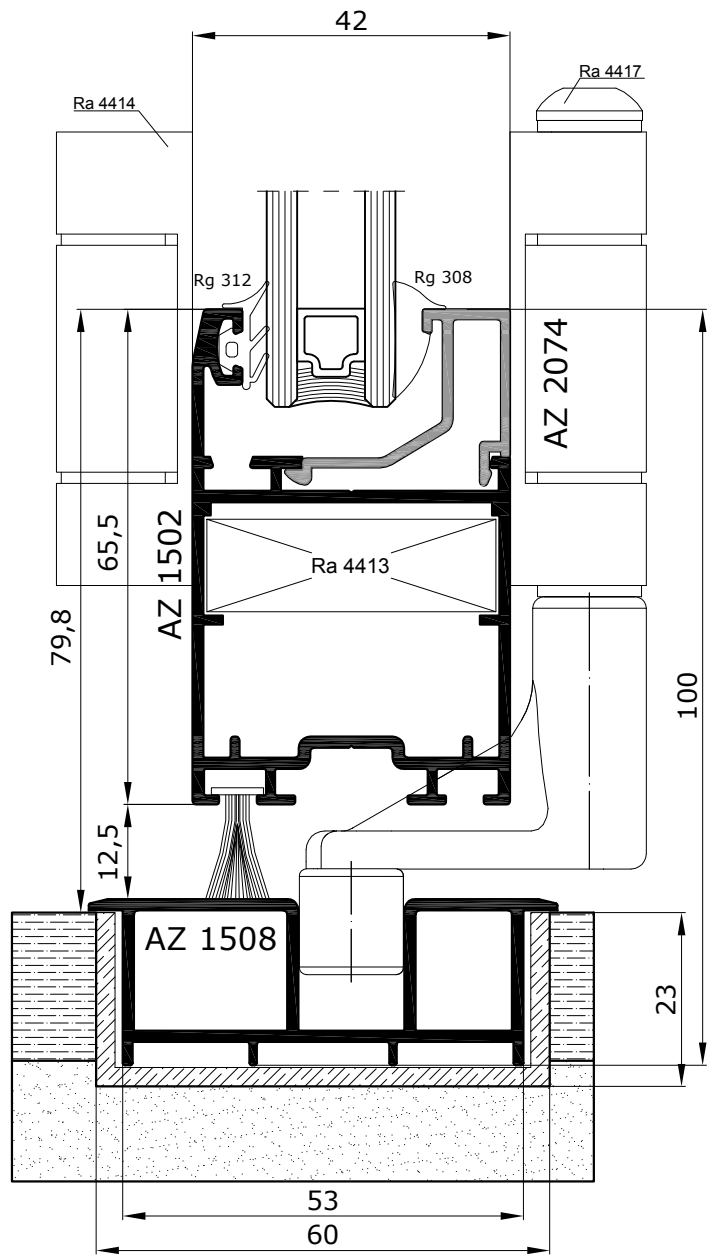
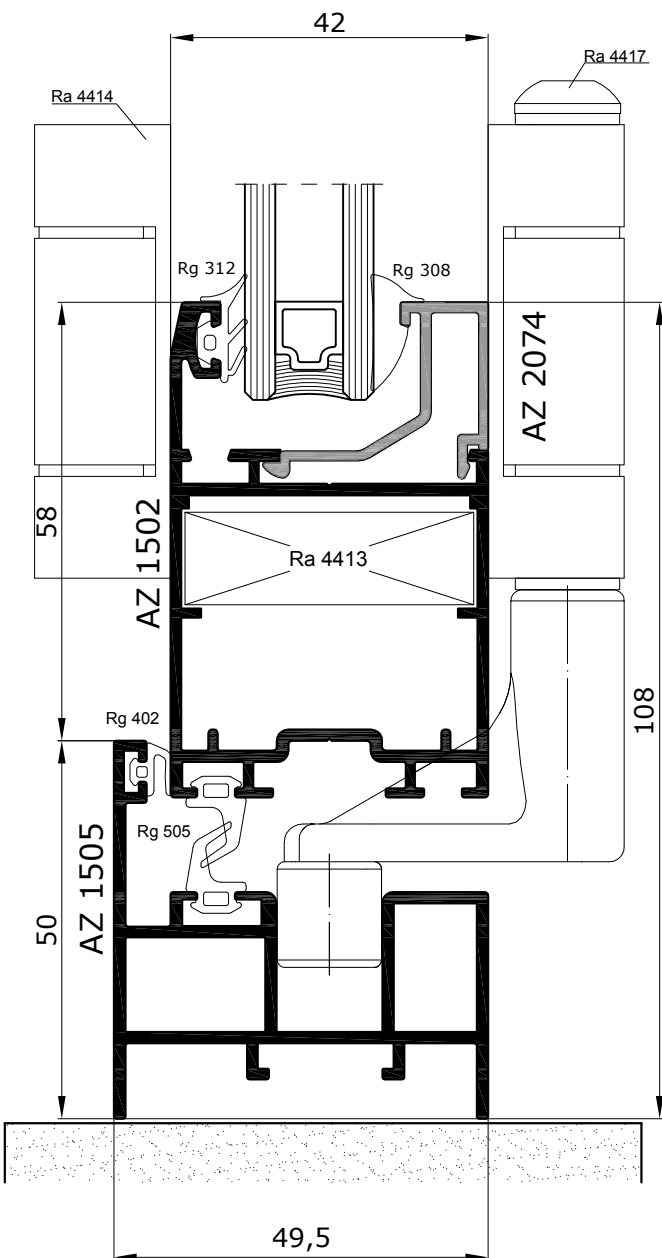
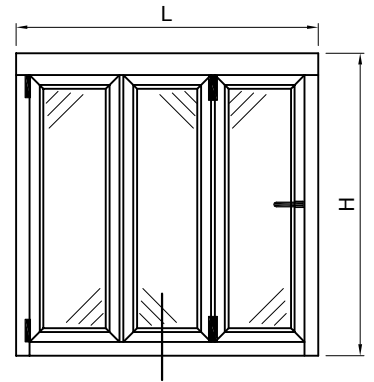
Finestra scorrevole sistema a libro

scala 1:1

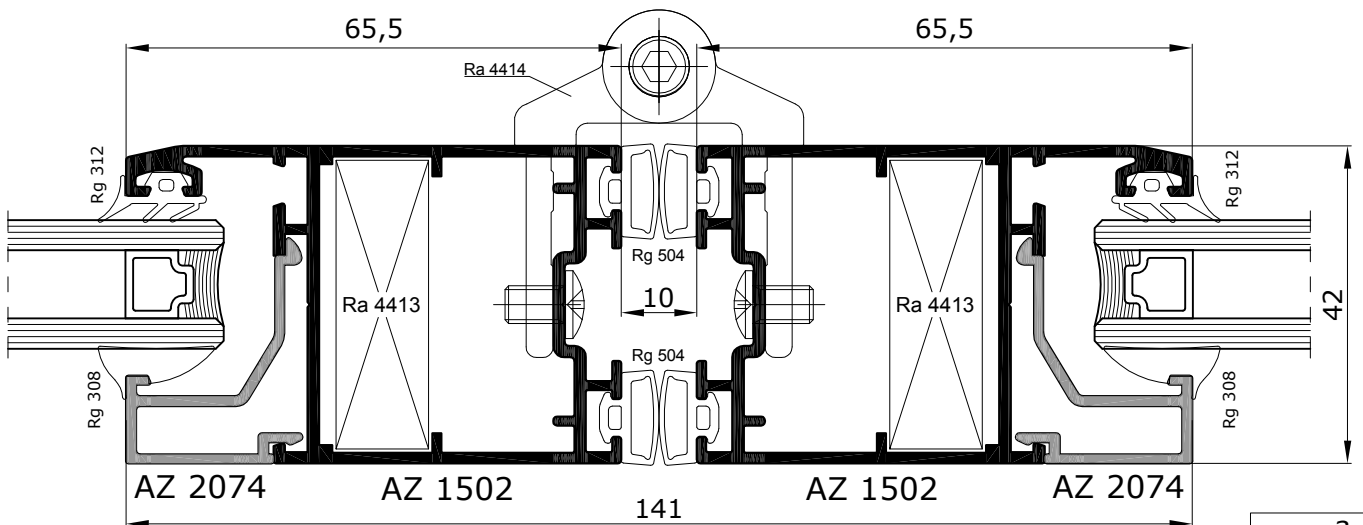
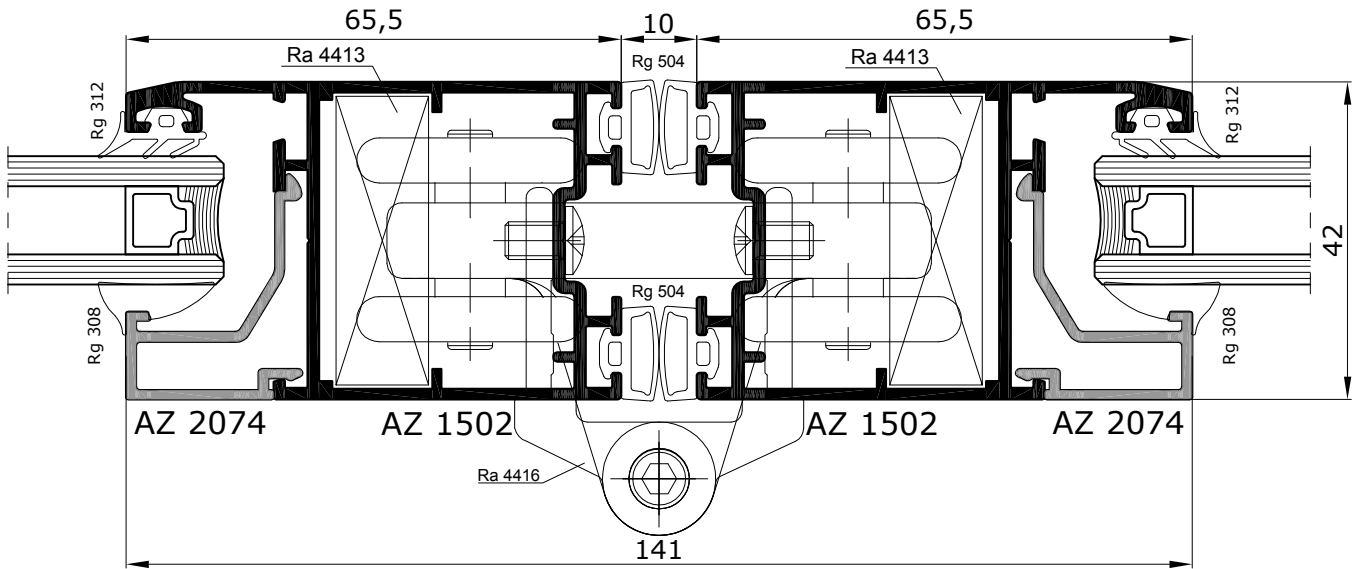
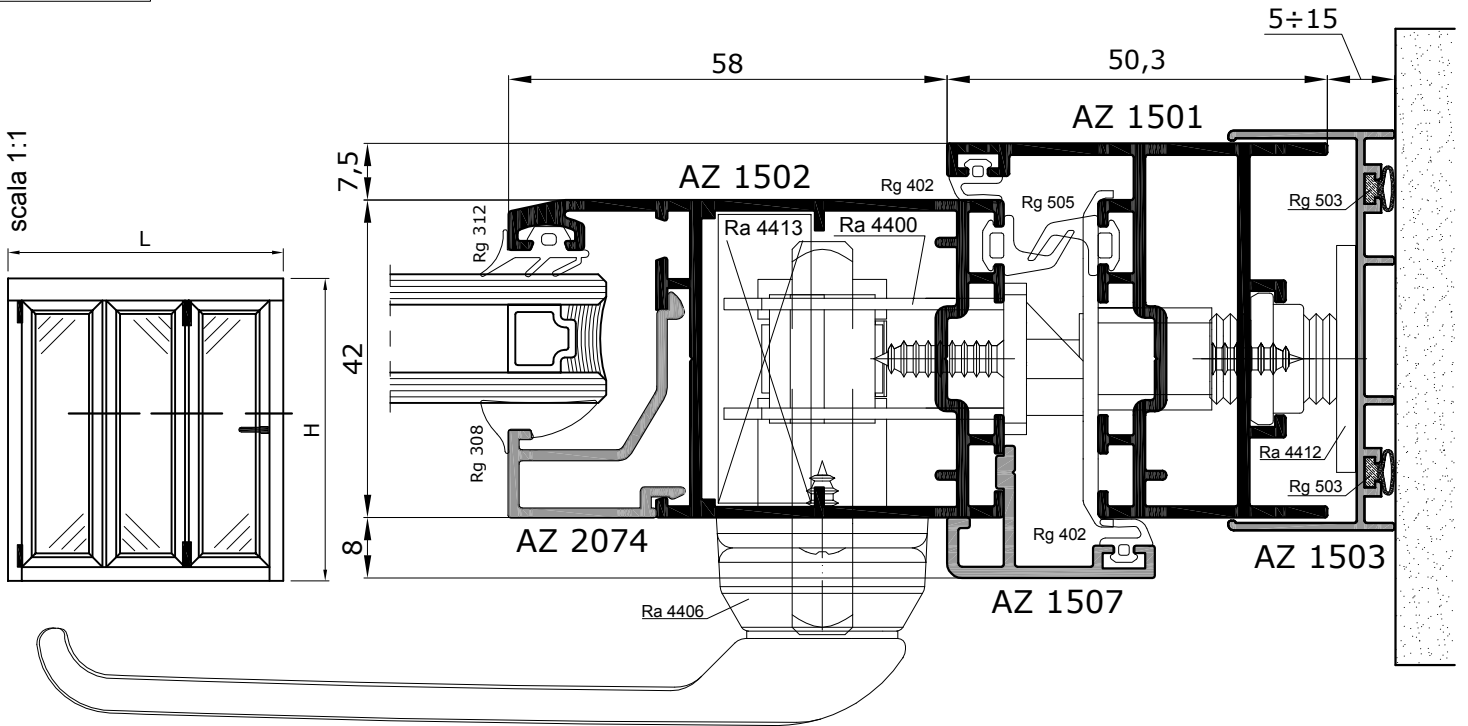


Finestra scorrevole sistema a libro

scala 1:1

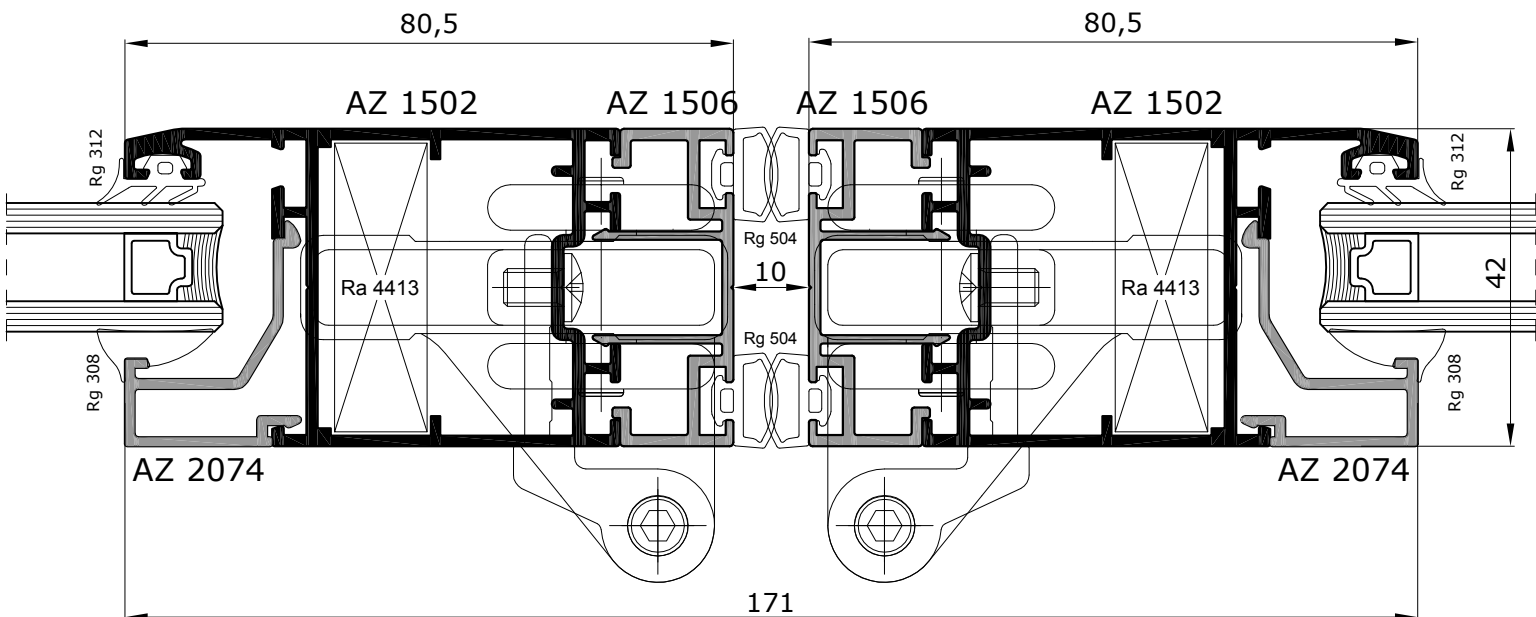
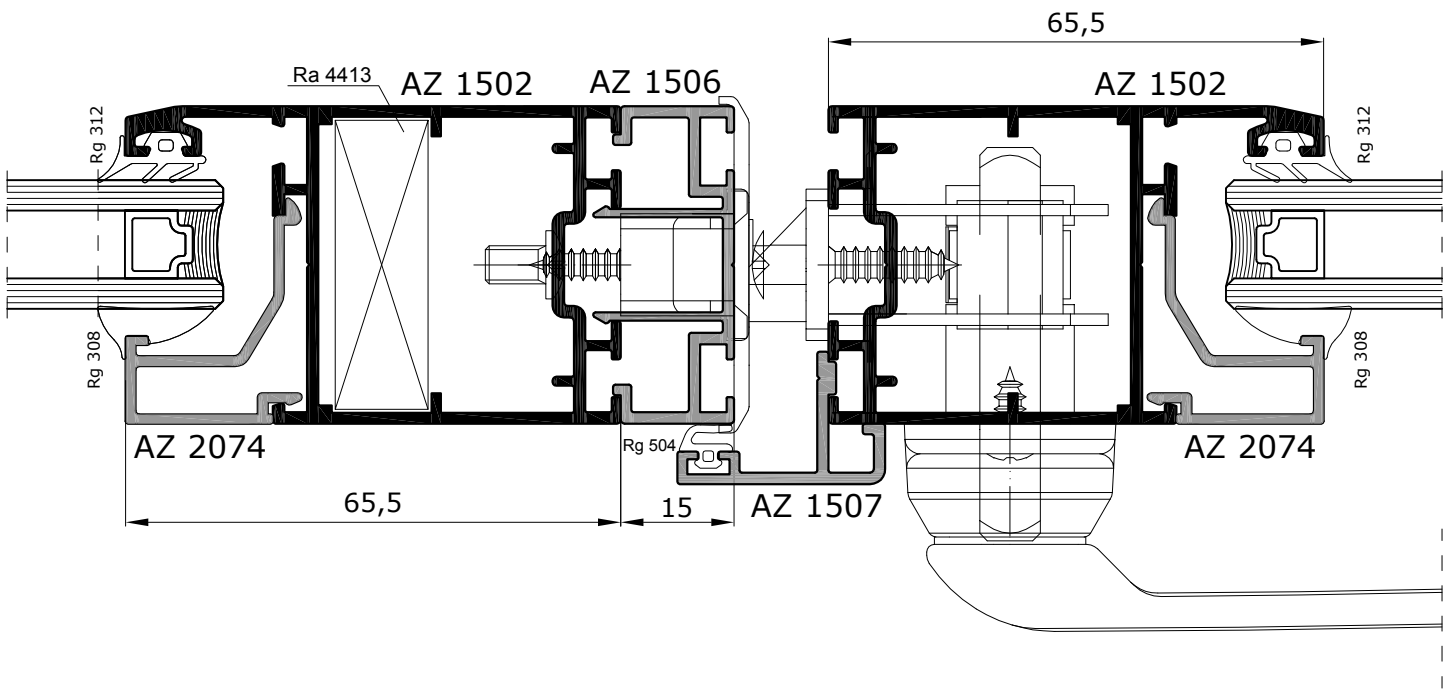
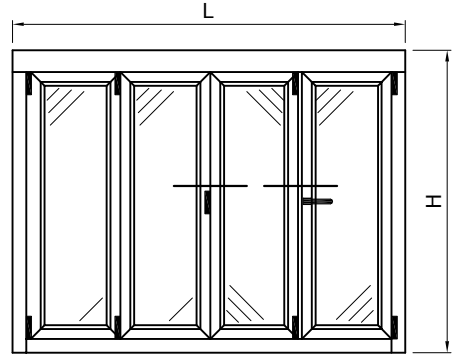


Finestra scorrevole sistema a libro

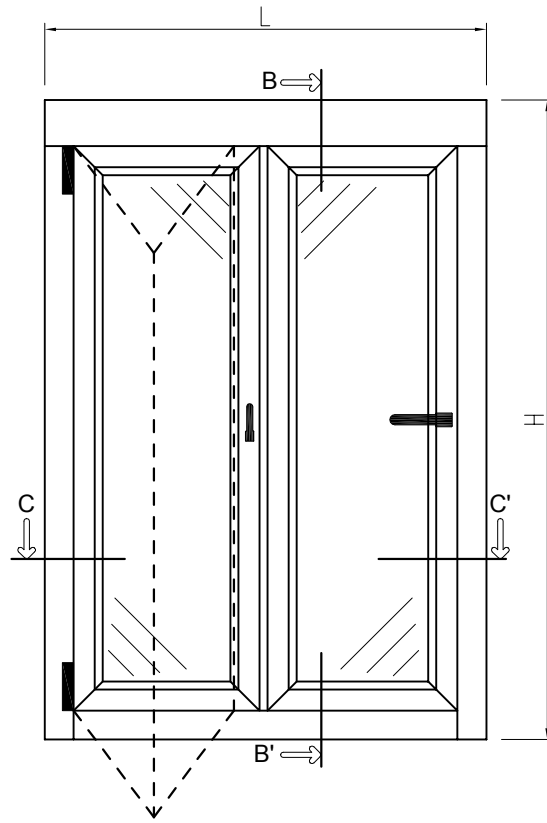


Porta scorrevole sistema a libro

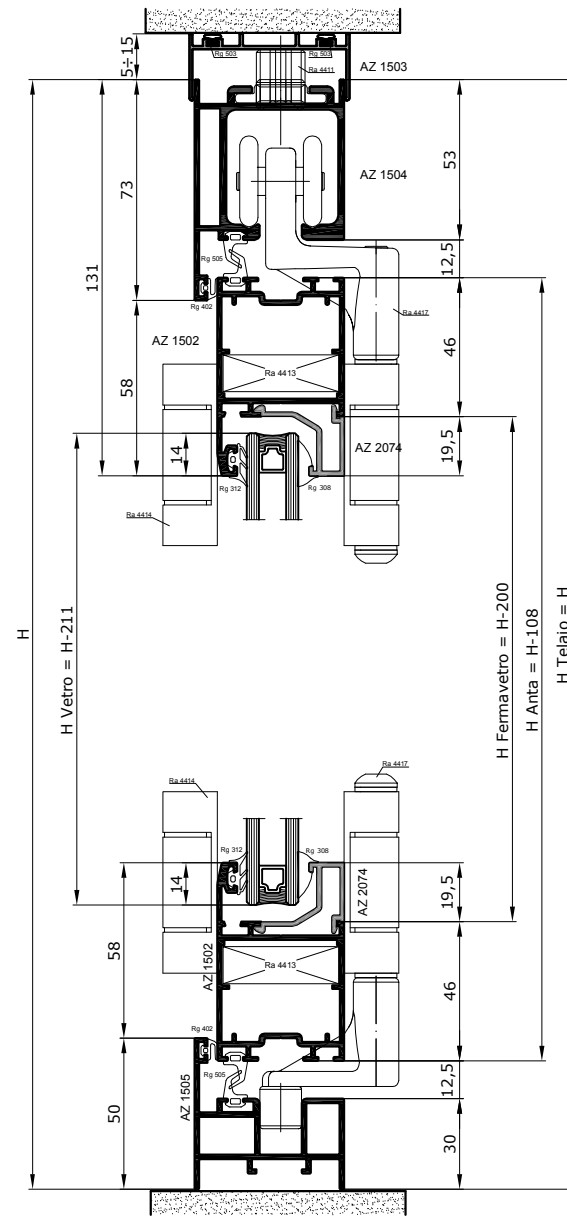
scala 1:1



distinte di taglio  
cutting sizes



DISTINTA TAGLIO VETRI			
Posizione	l	h	Q.tà
	L/2 - 148,3	H - 211	2

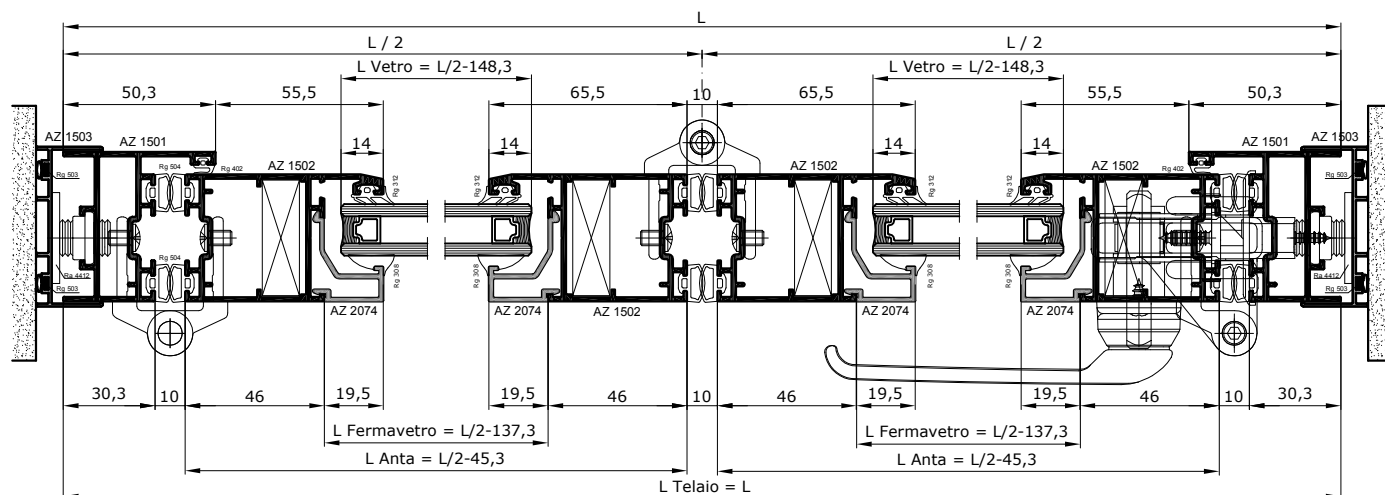


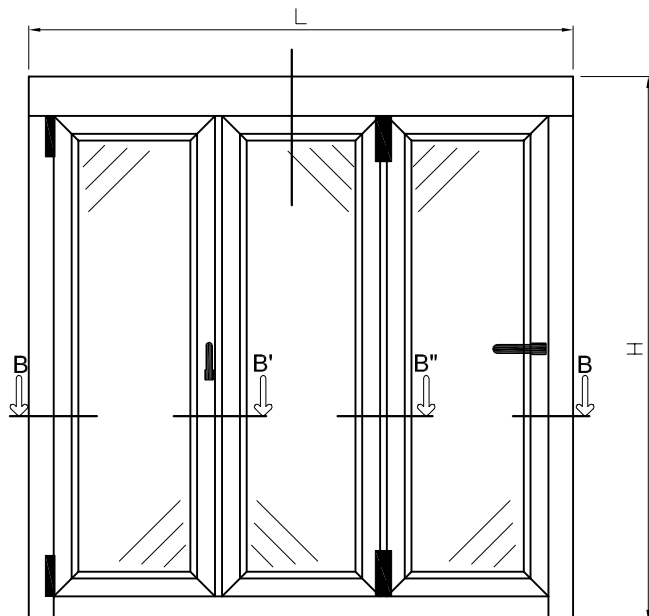
### ACCESSORI SERRAMENTO A 2 ANTE

ART.	DESCRIZIONE	Dimensione		
		fino a 2200mm	da 2200mm a 2600mm	da 2600mm a 3000mm
Ra 4405	FERMA ANTA MAGNETICO DA 20 mm		1	
Ra 4401	CHIUSURA REVERSIBILE CON PIGNONE E CREMAGLIERE		1	
Ra 4406	MANIGLIA IN ALLUMINIO CON PERNO DA 42mm		1	
Ra 4407	MANIGLIA RIBASSATA CON PERNO DA 42mm		1	
Ra 4412	REGOLATOPRE A MURO PRESSOFUSO	9	11	13
Ra 4411	REGOLATORE PER GUIDA SUPERIORE		3	
Ra 4413	SQUADRETTA FISSAGGIO A BOTTONI		8	
Ra 4414	CERNIERA A PETTINE DA 60mm	4	6	8
Ra 4417	COPIA CARRELLO A PATTINO DI SCORRIMENTO SINISTRI		1	
Ra 4418	COPIA CARRELLO A PATTINO DI SCORRIMENTO DESTRI		1	

### GUARNIZIONI

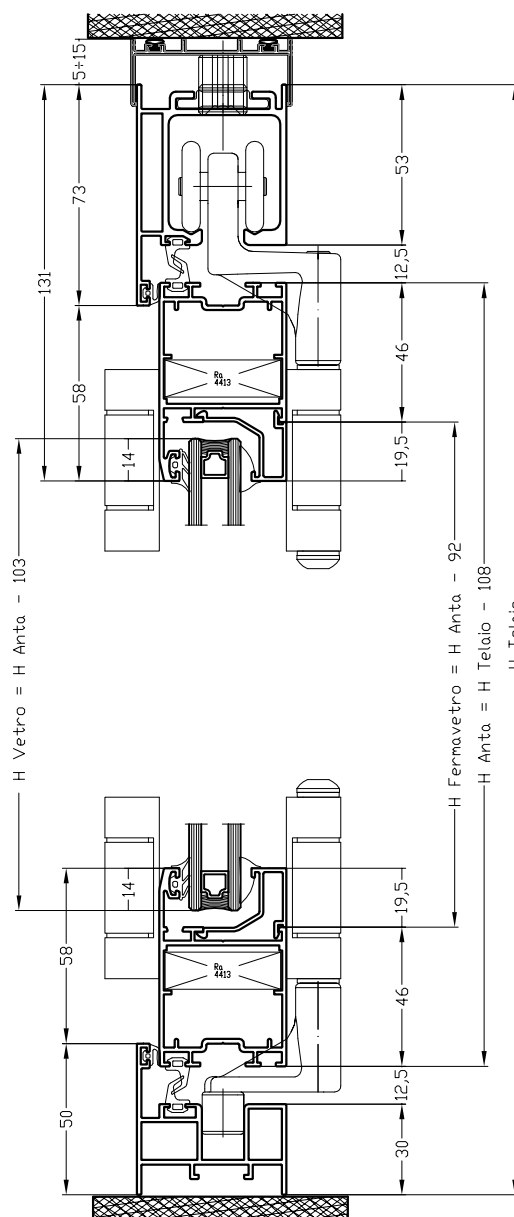
	ART.	DESCRIZIONE	N° P.zzi
	Rg 503	G. A PALLONCINO CON PIEDINO RIGIDO	2L + 4H
	Rg 505	G. A PINNA INTERNA	4L
	Rg 402	G. BATTUTA INTERNA	2L + 2H
	Rg 312	G. ESTERNA VETRO PER VANO DA 3,5mm	2L + 4H
	Rg 308	G. ESTERNA VETRO PER VANO DA 4mm	2L + 4H
	Rg 504	G. A PALLONCINO	12H





DISTINTA TAGLIO VETRI			
Posizione	l	h	Q.tà
	Lanta-103	Hanta -103	3

Le dimensioni riportate sono espresse in mm

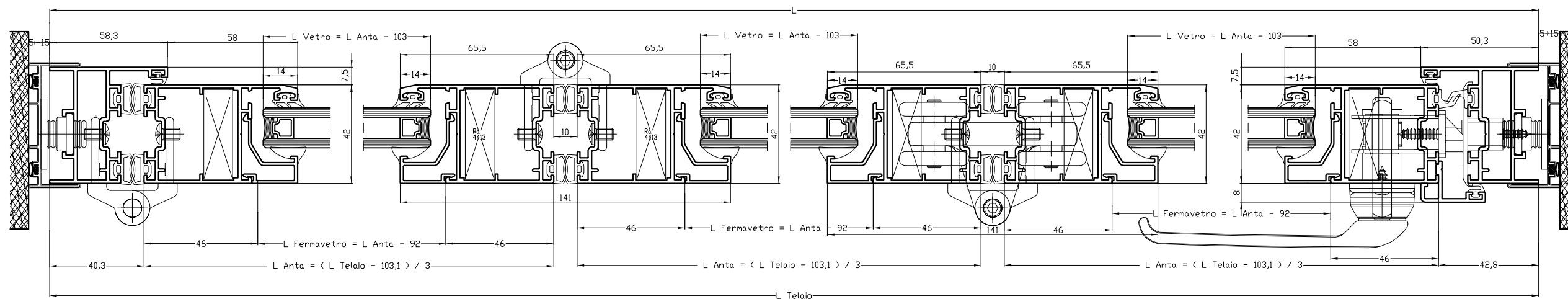


### ACCESSORI SERRAMENTO A 3 ANTE

ART.	DESCRIZIONE	fino a 2200mm	da 2200mm a 2600mm	da 2600mm a 3000mm
		Ra 4402	COPPIA MANIGLIE IN ALLUMINIO CON PERNO DA 88mm	
Ra 4410	CILINDRO A DOPPIA CHIAVE DA 54mm		1	
Ra 4404	FERMA ANTA MAGNETICO DA 38mm		1	
Ra 4405	FERMA ANTA MAGNETICO DA 20mm		1	
Ra 4401	CHIUSURA REVERSIBILE CON PIGNONE E CREMAGLIERE		1	
Ra 4407	MANIGIA RIBASSATA CON PERNO DA 42mm			1
Ra 4409	MEZZO CILINDRO DA 41mm		1	
Ra 4410	CILINDRO A DOPPIA CHIAVE DA 54mm		1	
Ra 4412	REGOLATORE A MURO PRESSOFUSO CON INSERTO DA 20mm	7	9	11
Ra 4411	REGOLATORE PER GUIDA SUPERIORE		3	
Ra 4413	SQUADRETTA FISSAGGIO A BOTTONI DA 36,4mm		12	
Ra 4414	CERNIERA CON PIASTRINO DI BLOCCAGGIO E GRANO DI FISSAGGIO	5	7	10
Ra 4416	COPPIA CARRELLO E PATTINO DI SCORRIMENTO CON CERNIERE		1	

### GUARNIZIONI

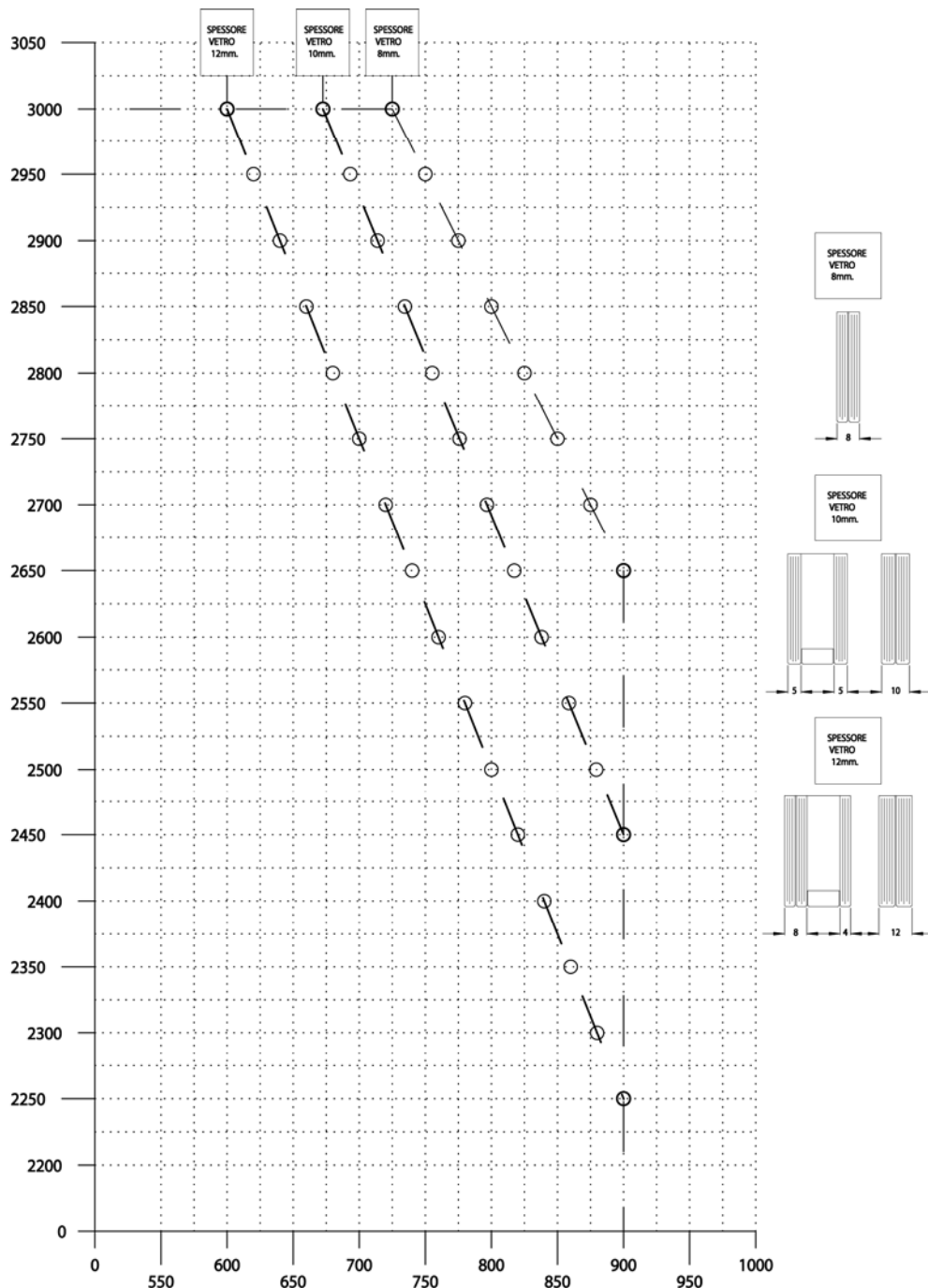
	ART.	DESCRIZIONE	N° P.zzi
	Rg 503	G. A PALLONCINO CON PIEDINO RIGIDO	2L + 4H
	Rg 505	G. A PINNA INTERNA	4L + 2H
	Rg 402	G. BATTUTA INTERNA	2L + 3H
	Rg 312	G. ESTERNA VETRO PER VANO DA 3,5mm	2L + 6H
	Rg 308	G. ESTERNA VETRO PER VANO DA 4mm	2L + 6H
	Rg 504	G. A PALLONCINO	12H





Lavorazioni  
*Processing*

Serie Light Space



NEL GRAFICO SONO RIPORTATI N°3 DIAGRAMMI DI DIMENSIONAMENTO ANTE IN FUNZIONE DELLE CARATTERISTICHE DEI PROFILATI, DELLA PORTATA DEGLI ACCESSORI E DELLO SPESSORE DEL VETRO UTILIZZATO. SI RACCOMANDA L'ADEGUATO SPESSORAMENTO DEL VETRO PER SCARICARE IL PESO DIRETTAMENTE NEL PUNTO DI APPLICAZIONE DELL'ACCESSORIO PER GARANTIRE ALLINEAMENTO E CORRETTO FUNZIONAMENTO. CONSIGLIAMO DI UTILIZZARE:

- N°2 CERNIERE PER PER MONTANTE IN SERRAMENTI AVENTI ALTEZZA FINO A 2200mm. DI ALTEZZA.
- N°3 CERNIERE PER PER MONTANTE IN SERRAMENTI AVENTI ALTEZZA FINO A 2600mm. DI ALTEZZA.
- N°4 CERNIERE PER PER MONTANTE IN SERRAMENTI AVENTI ALTEZZA FINO A 3000mm. DI ALTEZZA.

LE DIMENSIONI MASSIME DELL'ANTA, IL PESO MASSIMO PER SINGOLA ANTA E LA SUPERFICIE MASSIMA SONO DA RISPETTARE.

**SPESSORE VETRO 8mm.**

DIMENSIONI MAX. 3000x725mm. - 2650X900mm.

SUPERFICIE MAX. 2,2 - 2,4Mq.

PESO MAX. 50Kg.

**SPESSORE VETRO 10mm.**

DIMENSIONI MAX. 3000x675mm. - 2450X900mm.

SUPERFICIE MAX. 2 - 2,2Mq.

PESO MAX. 55 - 60Kg.

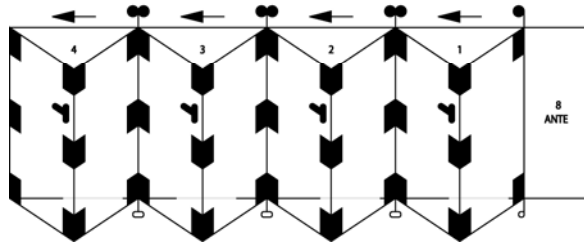
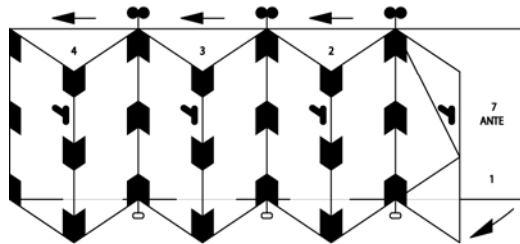
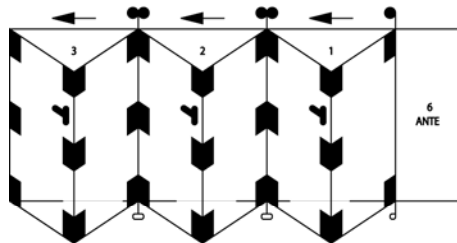
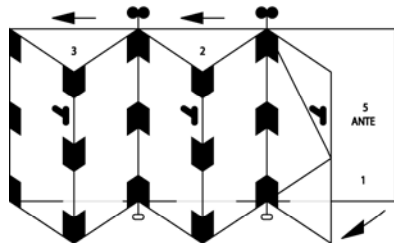
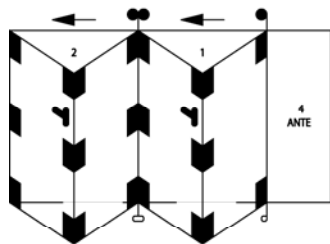
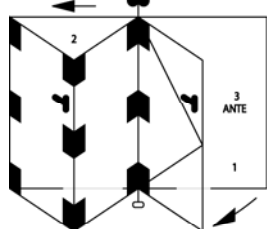
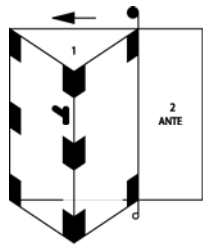
**SPESSORE VETRO 12mm.**

DIMENSIONI MAX.3000x600mm. - 2250X900mm.

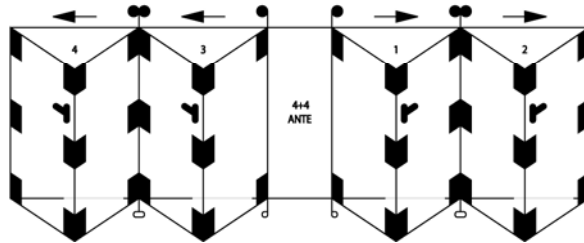
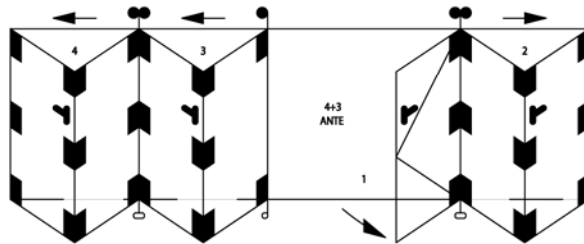
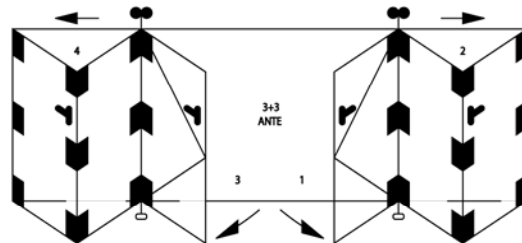
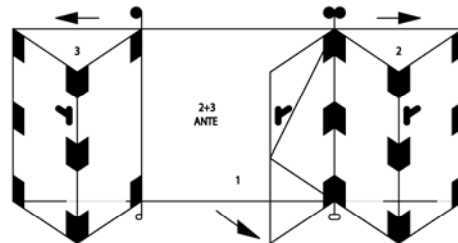
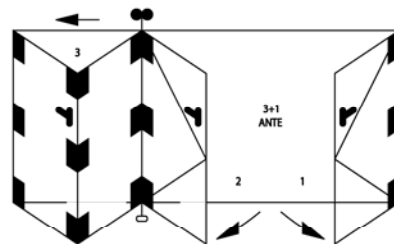
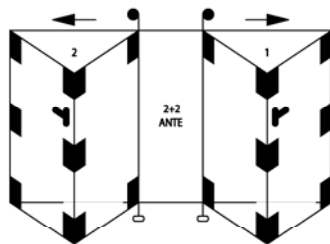
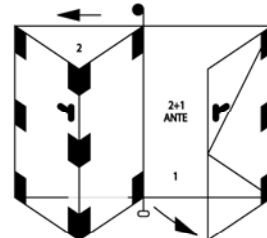
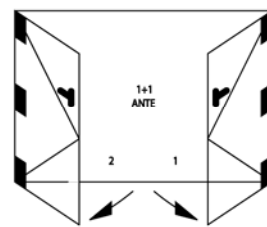
SUPERFICIE MAX. 1,8 - 2Mq.

PESO MAX. 60 - 65Kg.

## DIMENSIONAMENTO ANTE

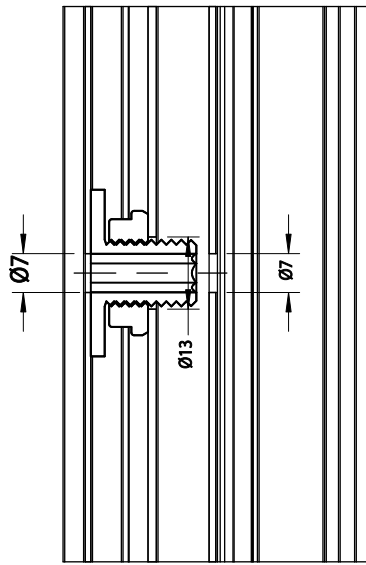


**TIPOLOGIA ANTE  
REALIZZABILI**

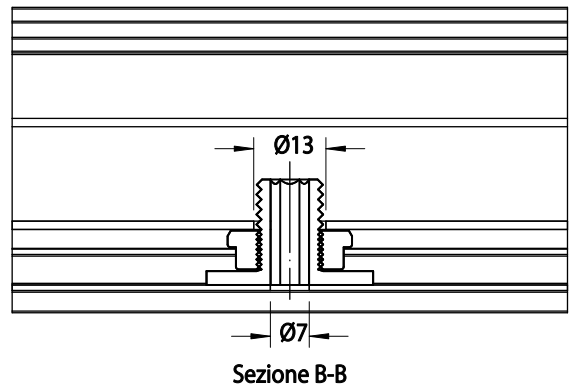
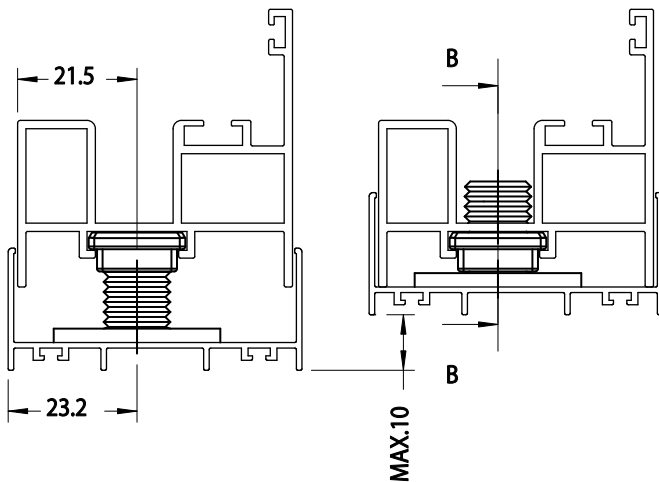
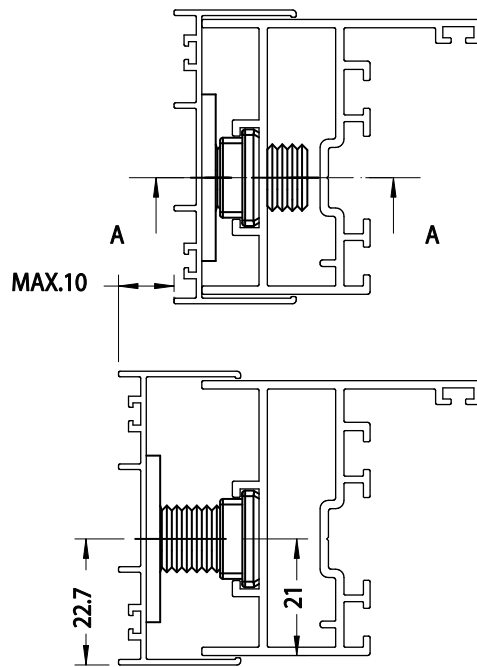


**TIPOLOGIA DI ANTE REALIZZABILI**

Ra 4412 Regolatore a muro pressofuso con inserto da 20mm

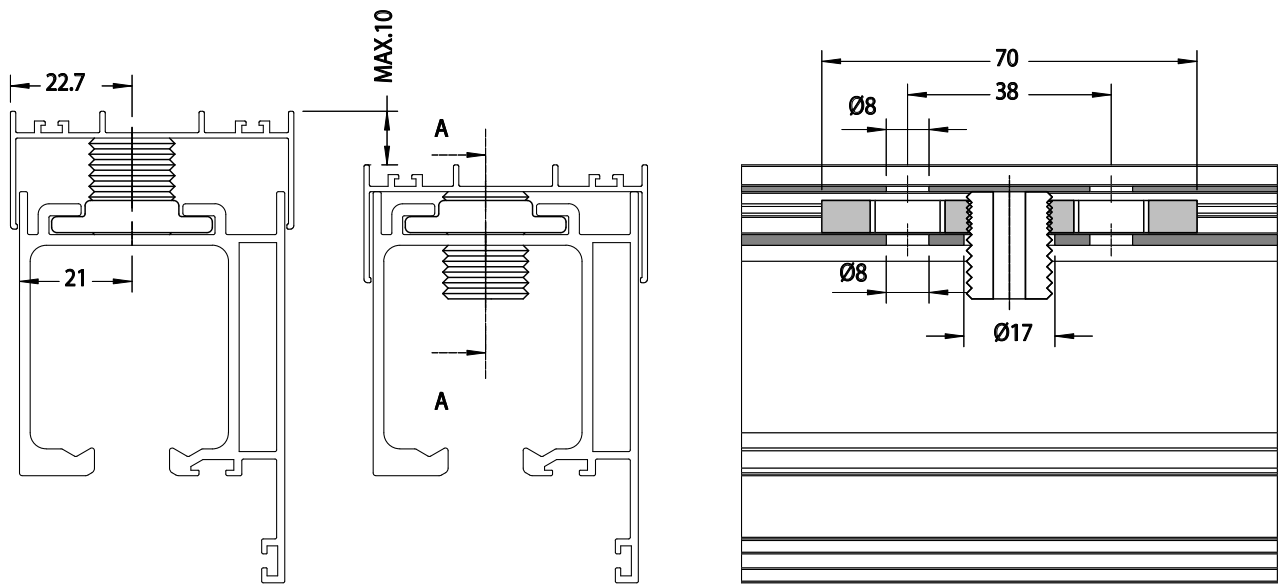


Sezione A-A



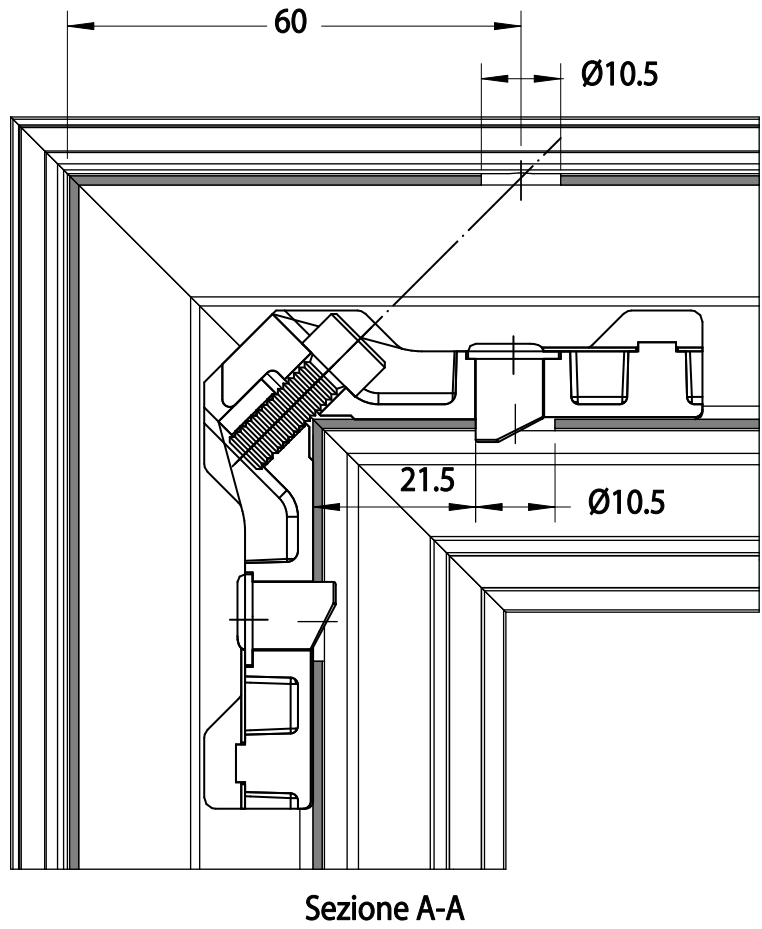
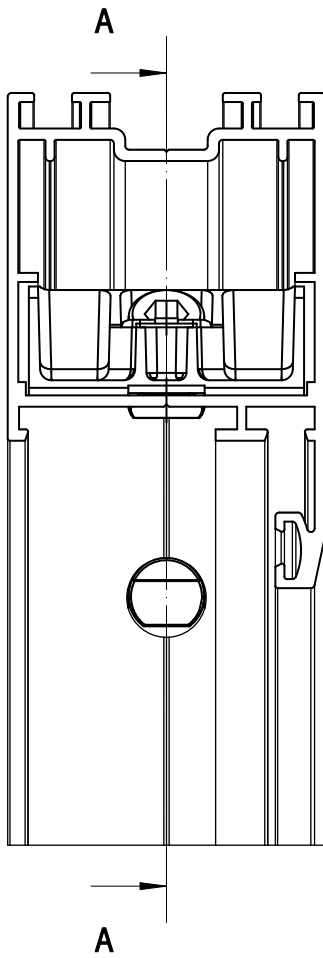
Sezione B-B

Ra 4411 Regolatore per guida superiore

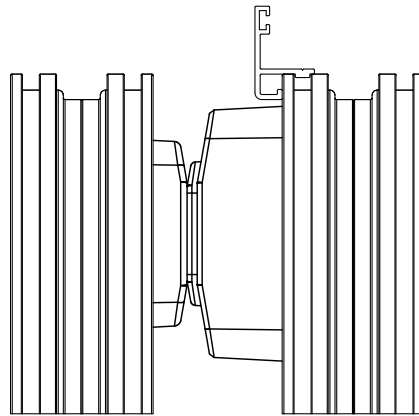
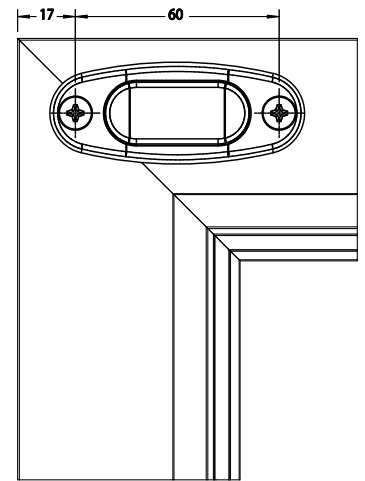
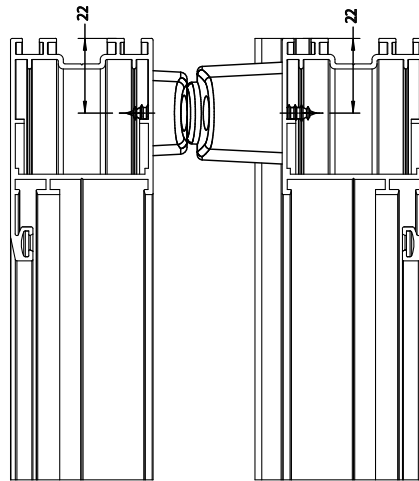
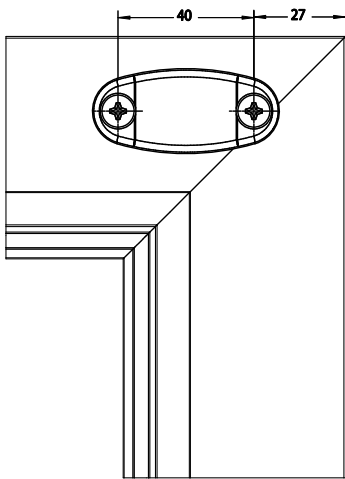


Sezione A-A

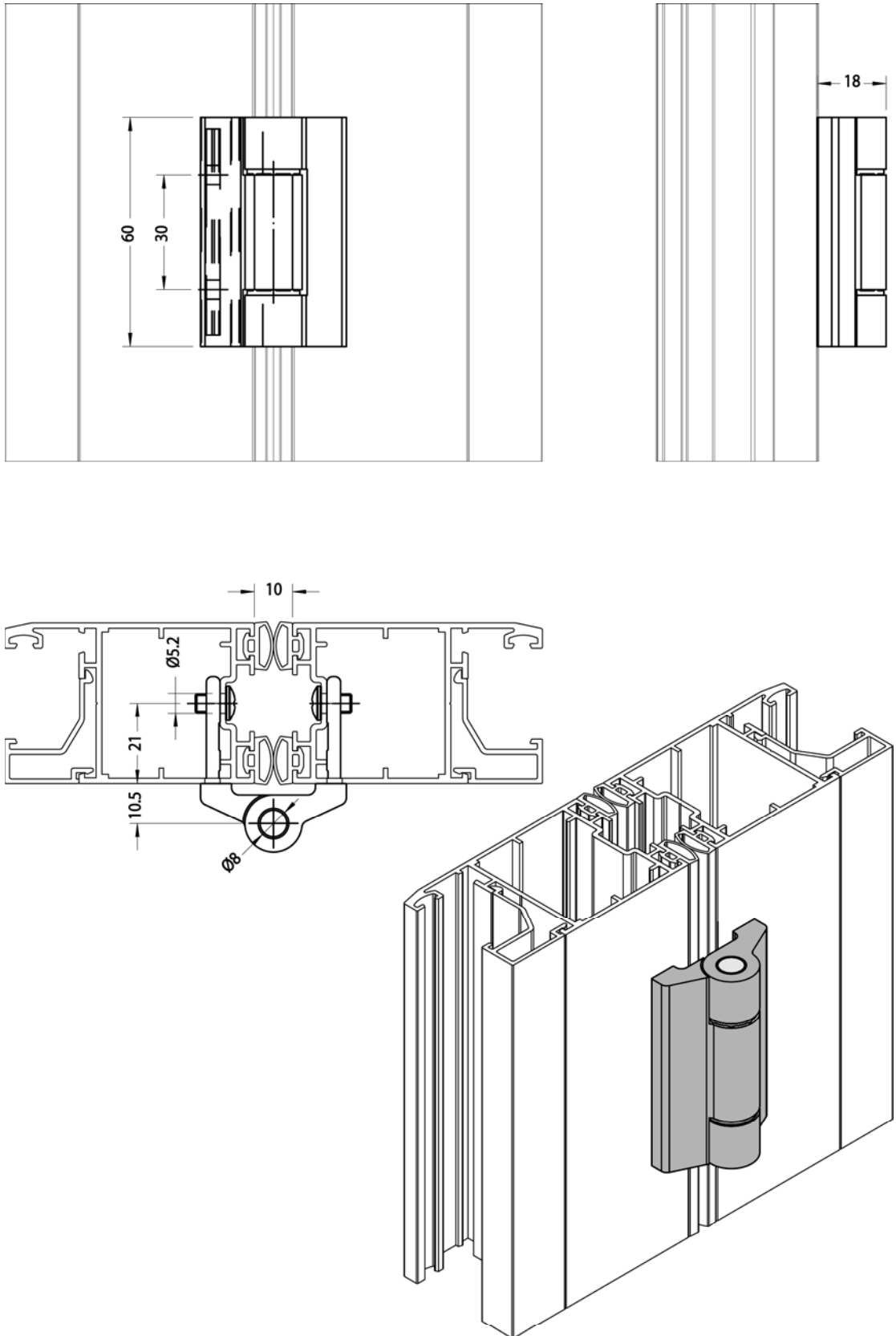
Ra 4413 Squadretta fissaggio a bottone in lega di zama



Ra 4404 Ferma anta magnetico da 38mm

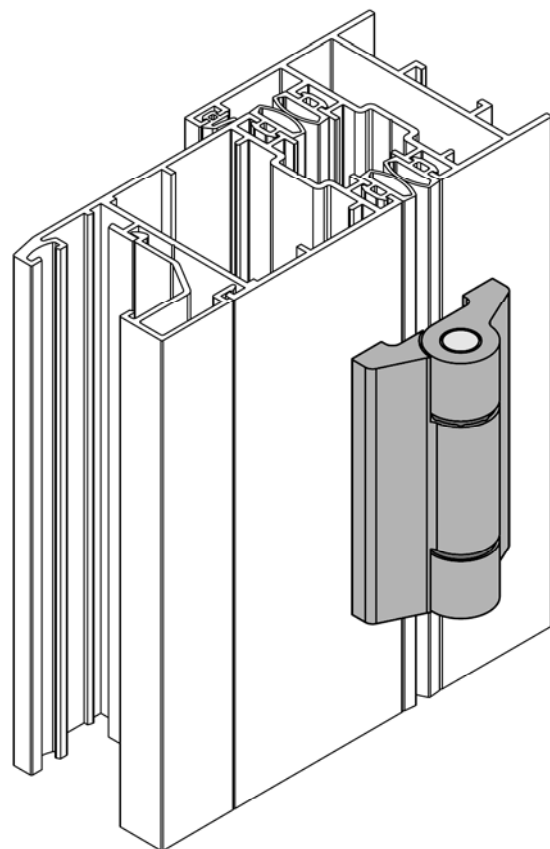
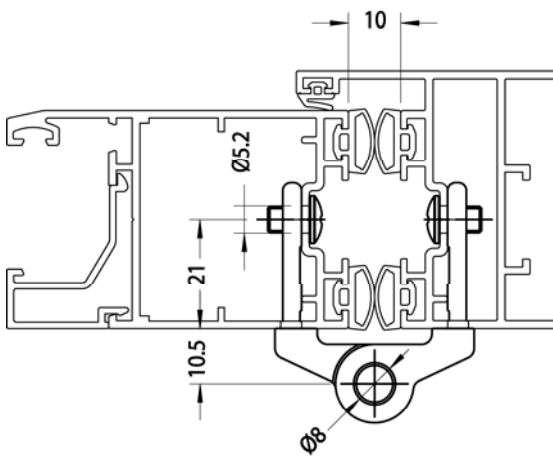
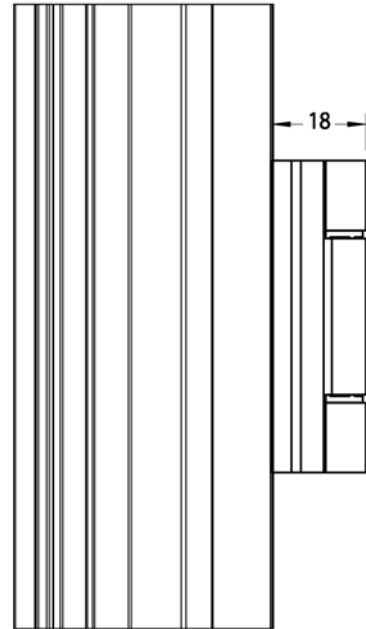
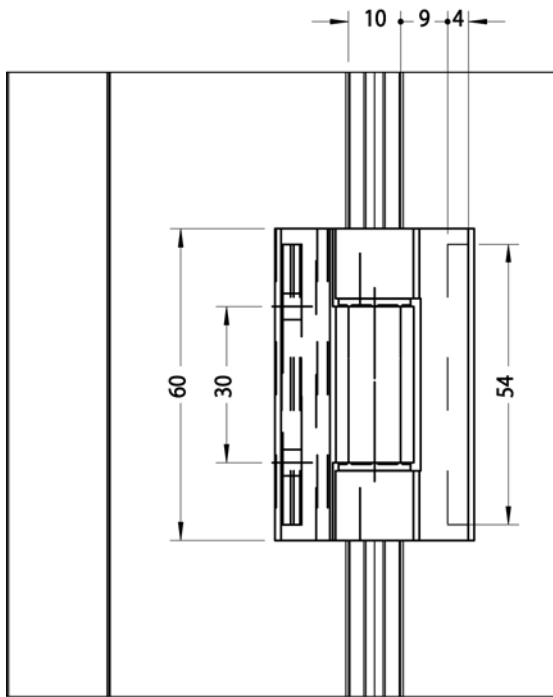


# Ra 4414 Cerniera con piastrino e grano di fissaggio

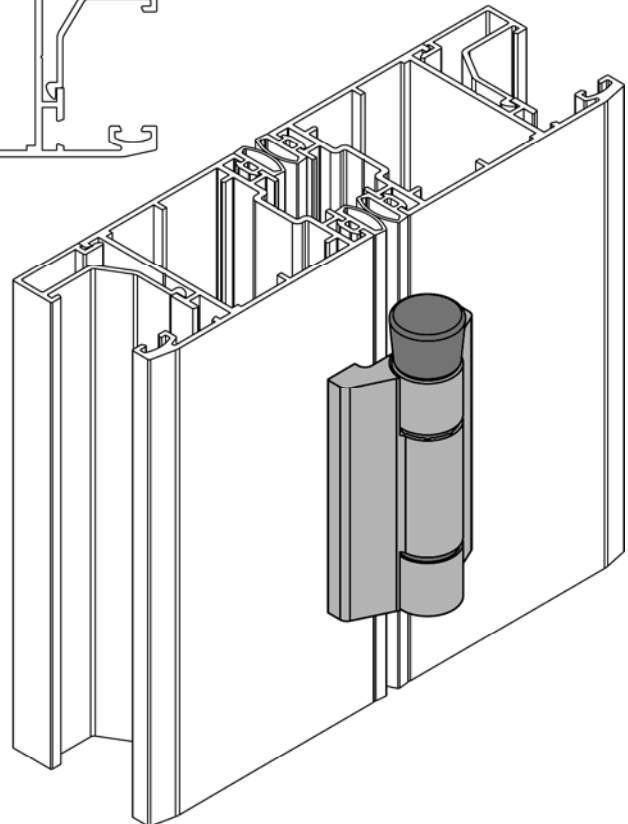
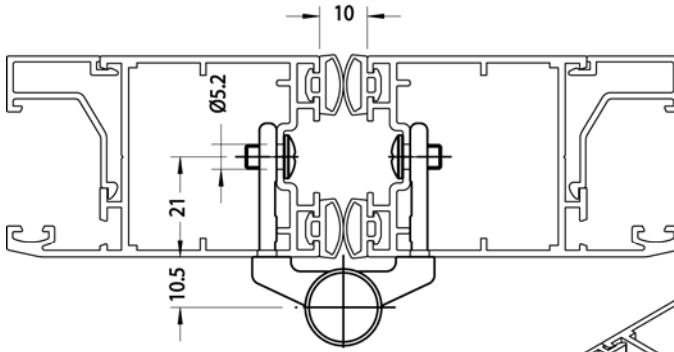
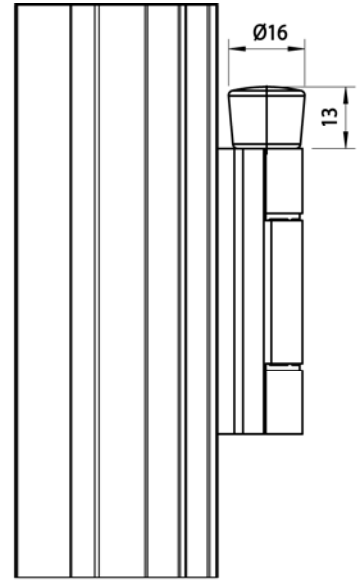
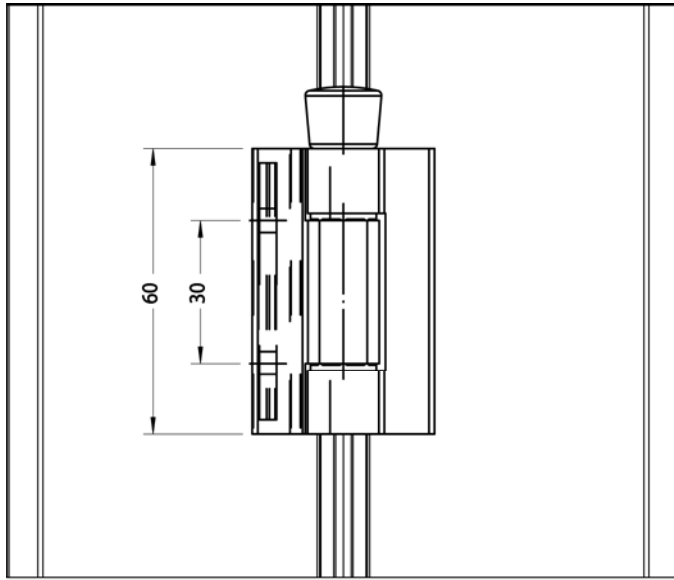




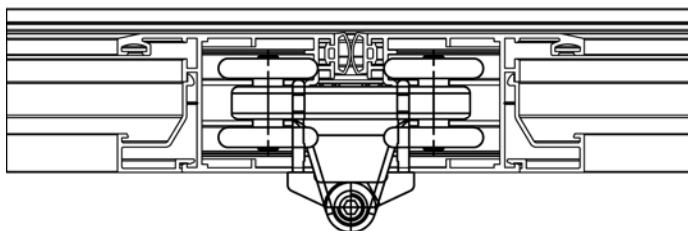
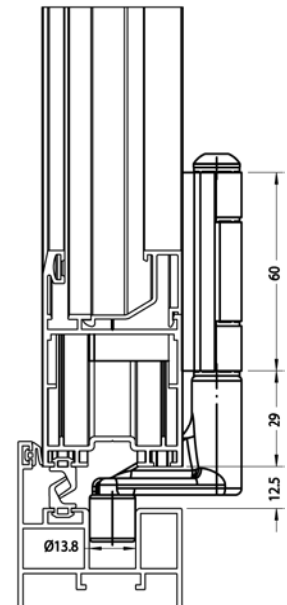
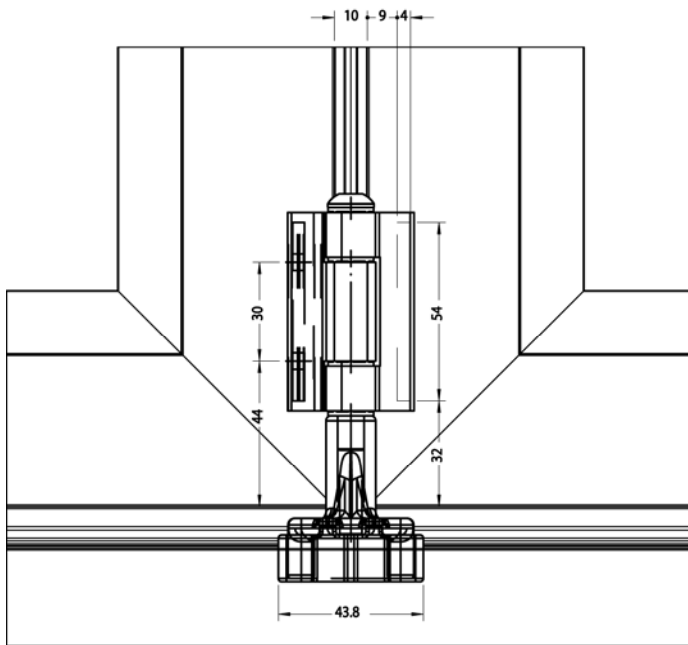
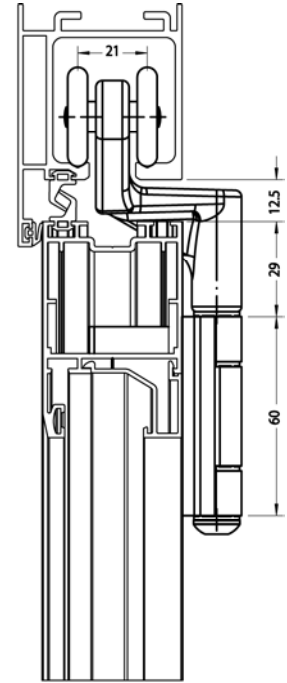
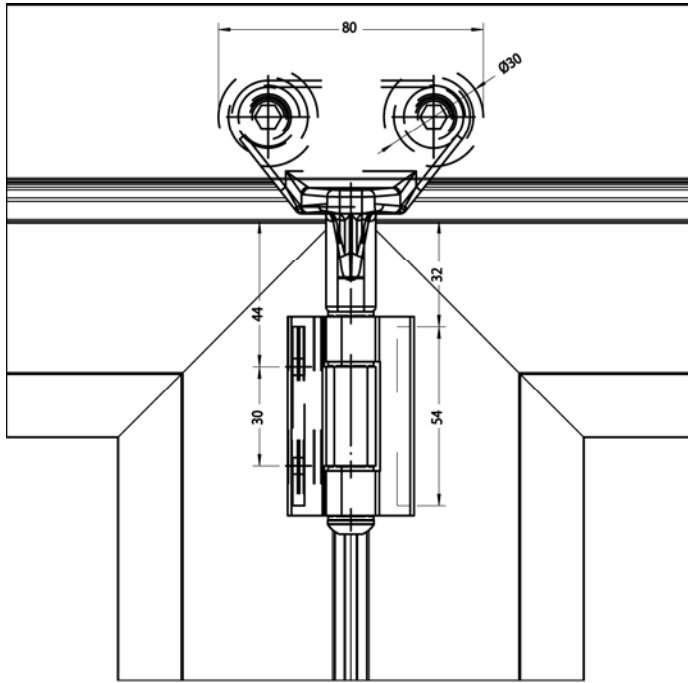
Ra 4414 Cerniera con piastrino e grano di fissaggio



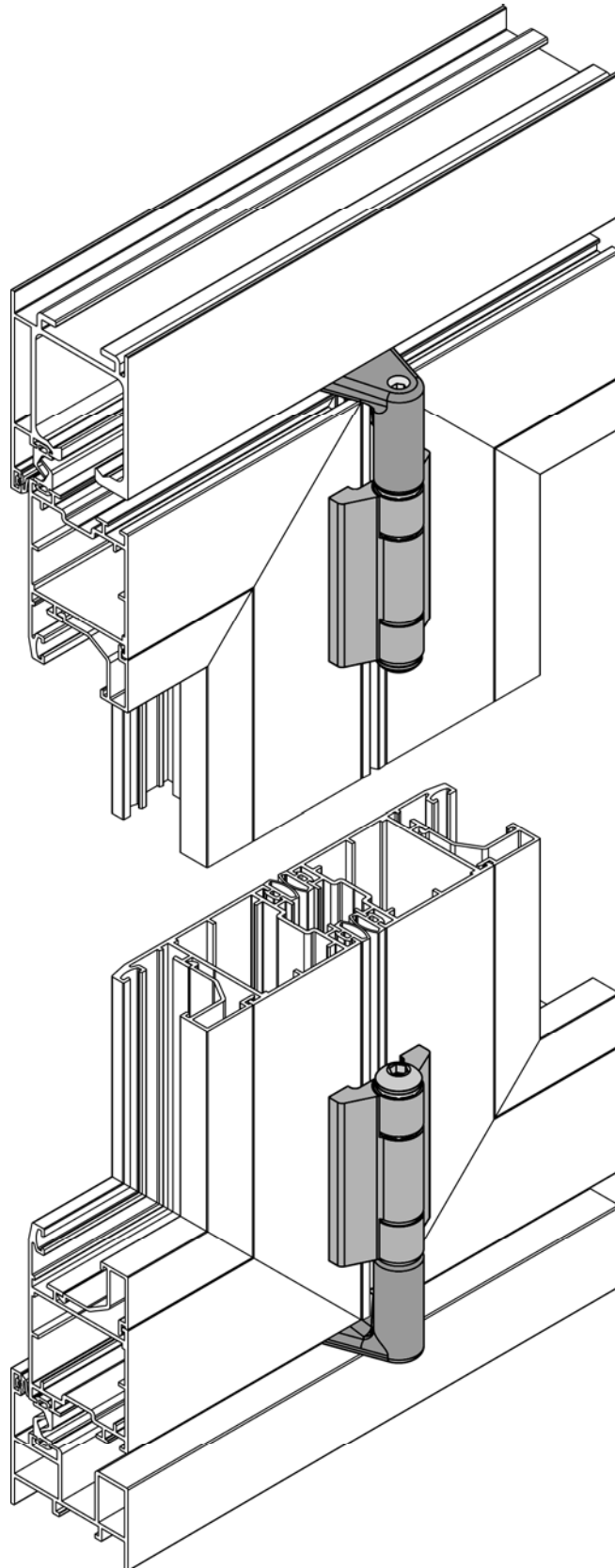
Ra 4415 Cerniera con piastrino e grano di fissaggio e perno sfilabile



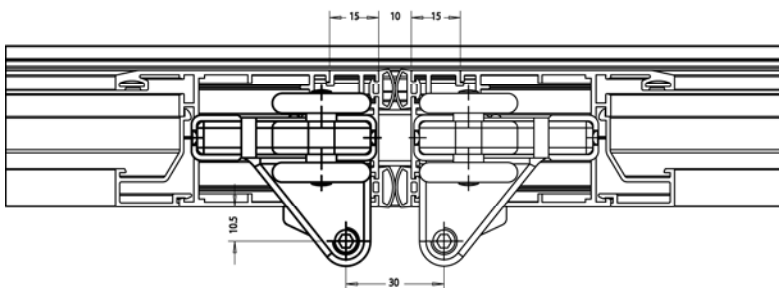
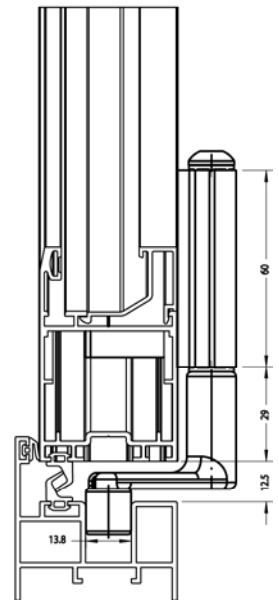
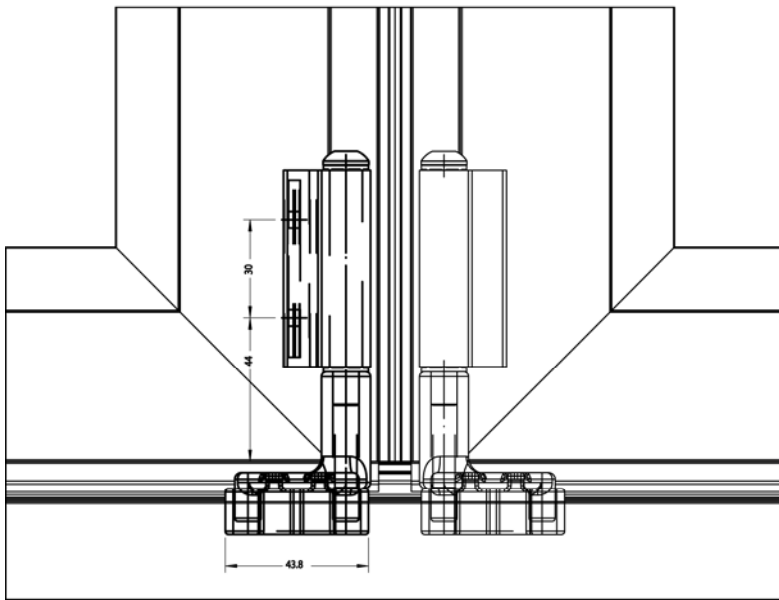
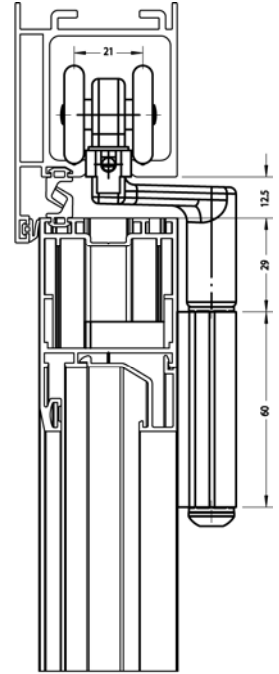
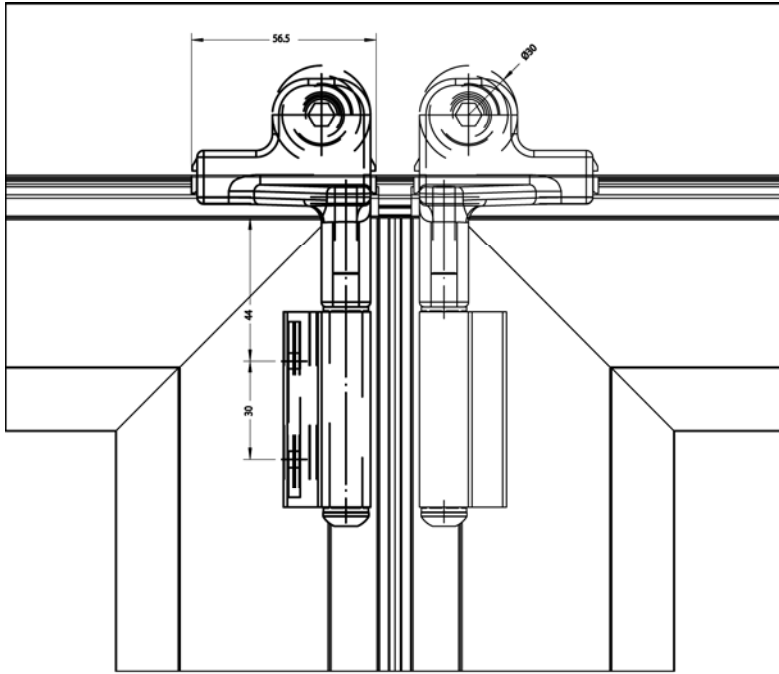
Ra 4416 Coppia carrello e piattino di scorrimento con cerniere



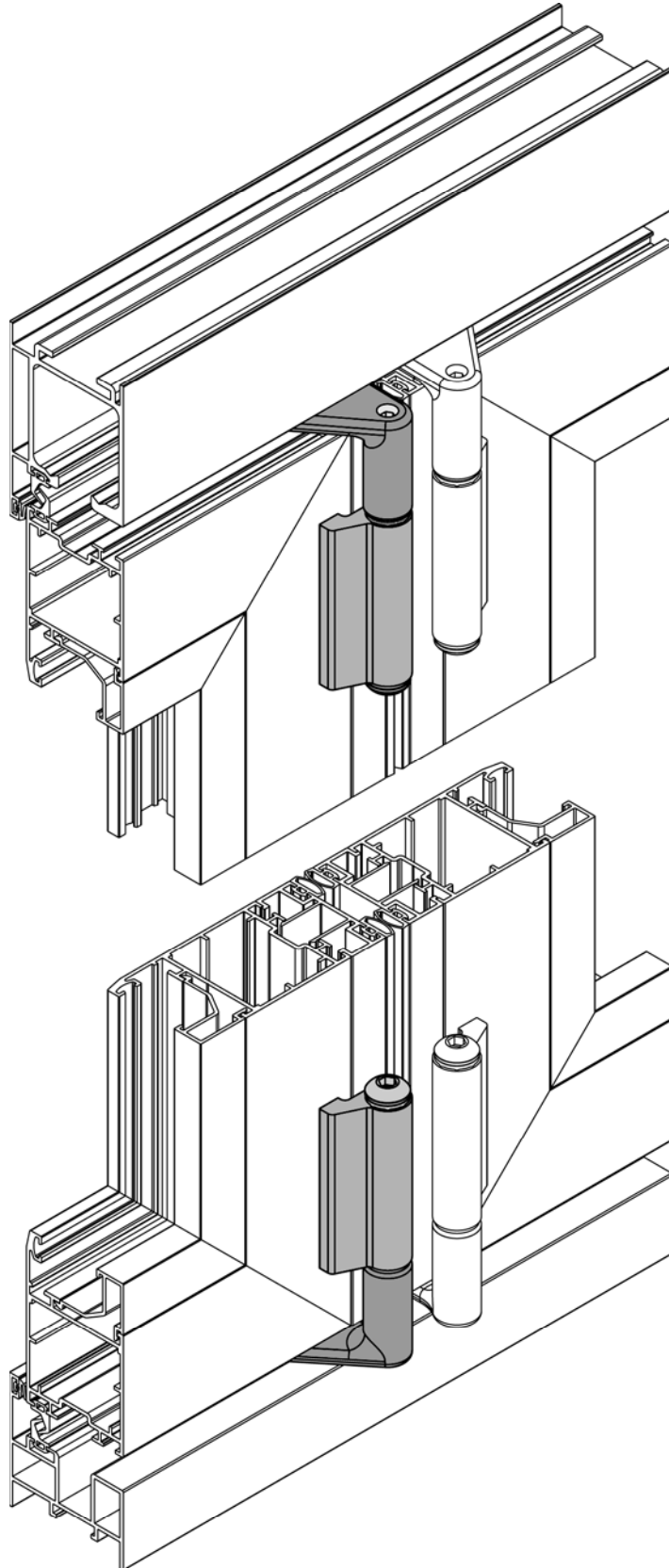
Ra 4416 Coppia carrello e pattino di scorrimento con cerniere



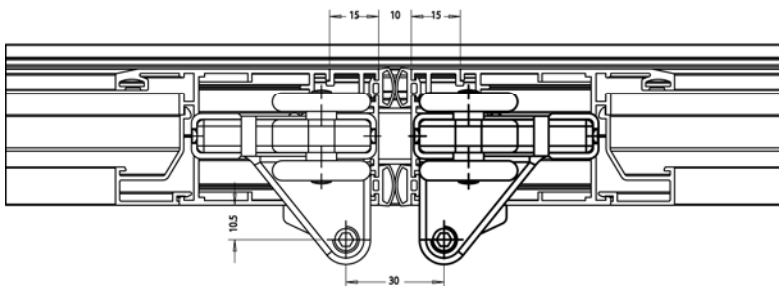
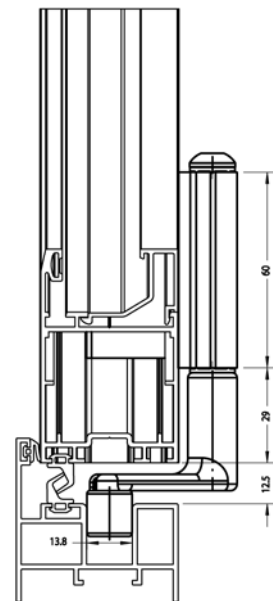
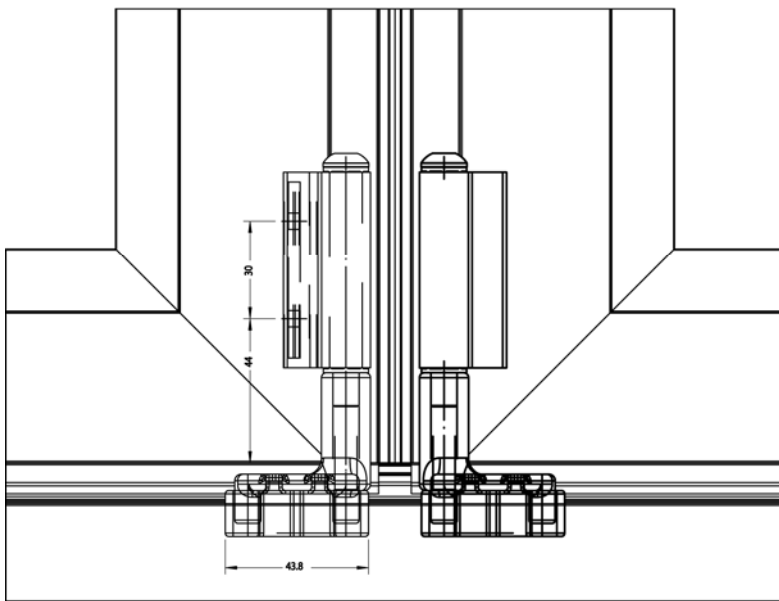
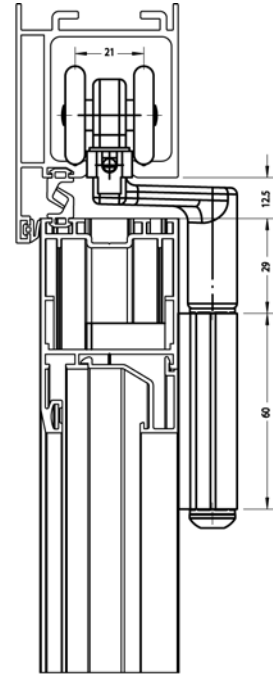
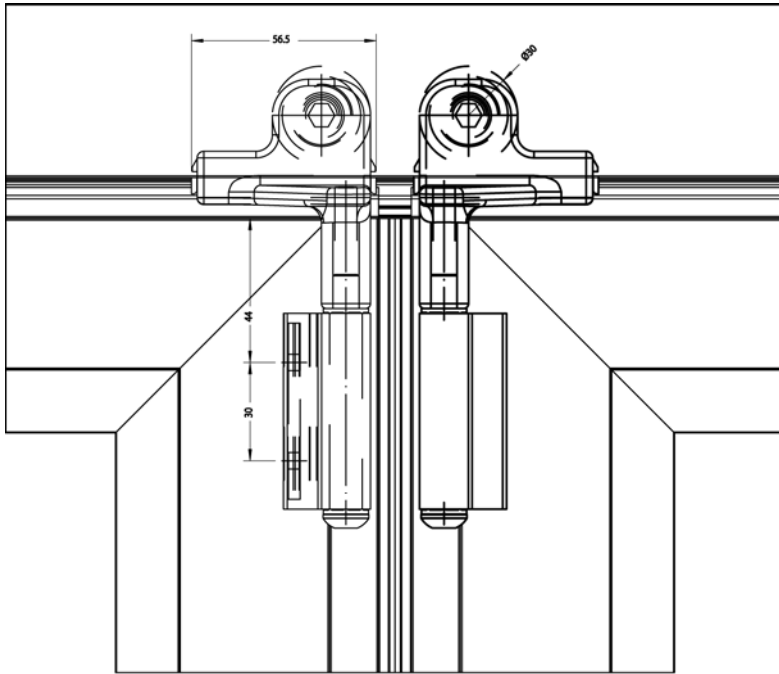
Ra 4417 Coppia carrello e pattino di scorrimento sinistri con cerniere



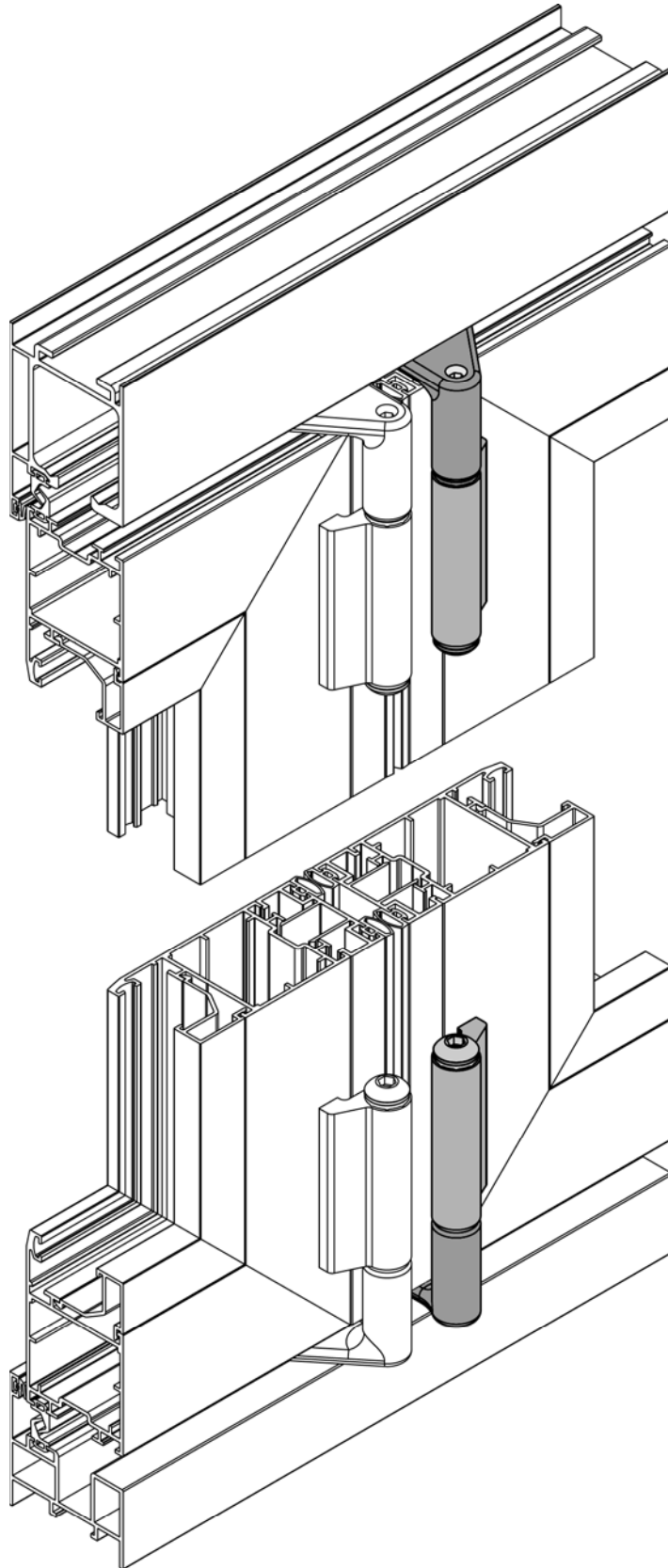
Ra 4417 Coppia carrello e pattino di scorrimento sinistri con cerniere



Ra 4418 Coppia carrello e piattino di scorrimento destri con cerniere

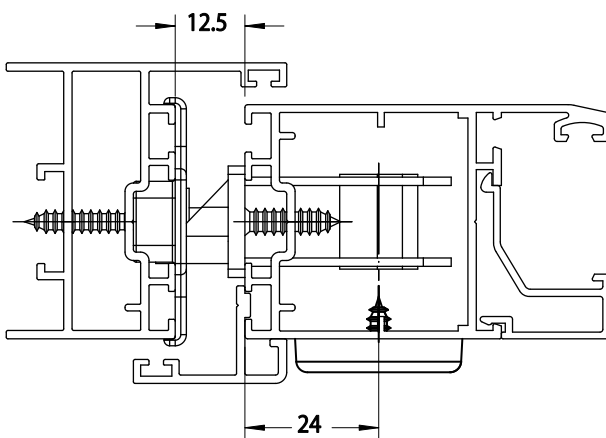
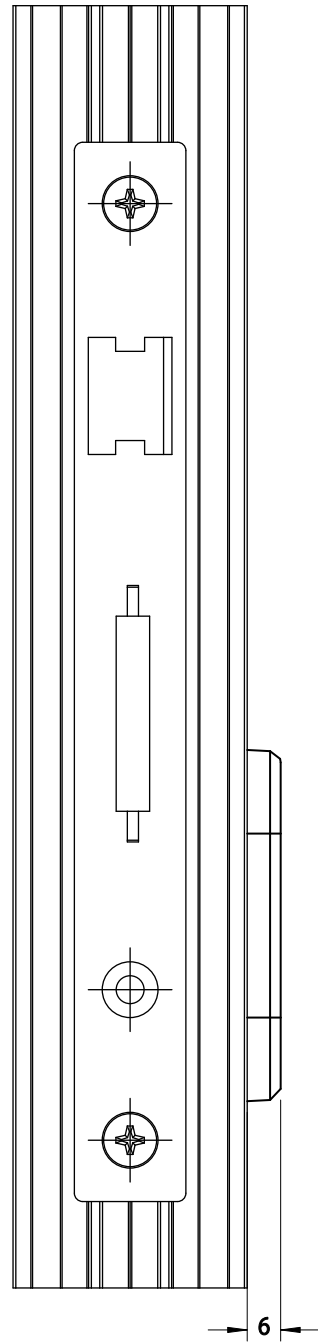
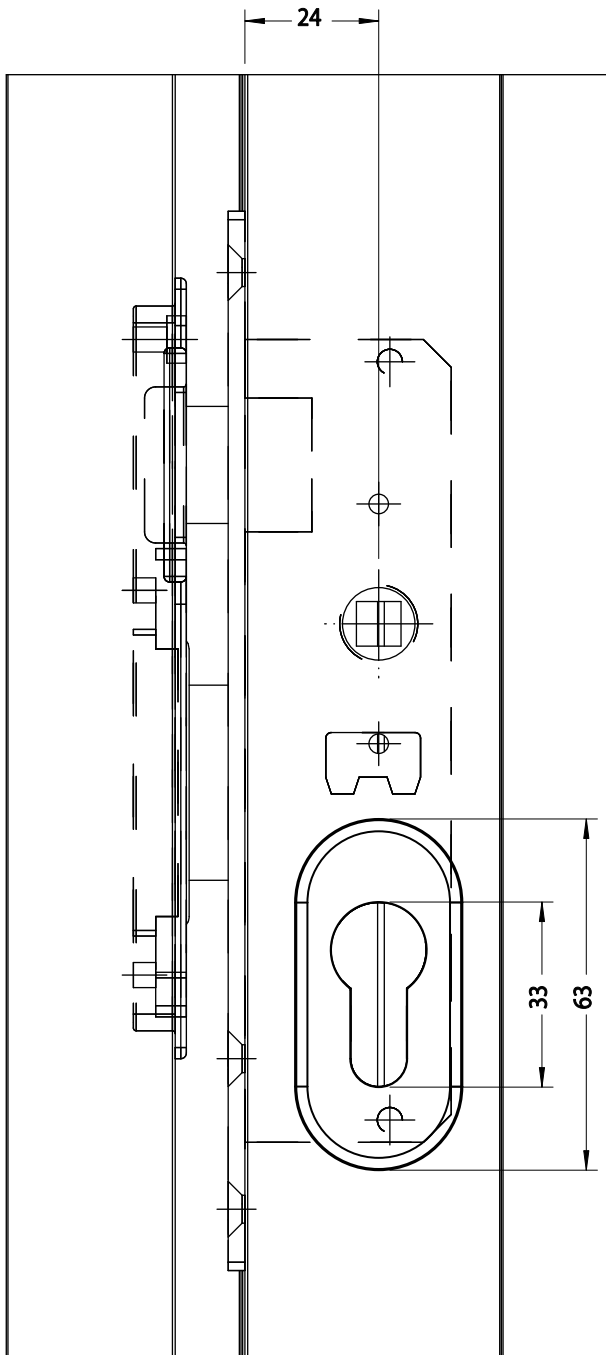


Ra 4418 Coppia carrello e pattino di scorrimento destri con cerniere

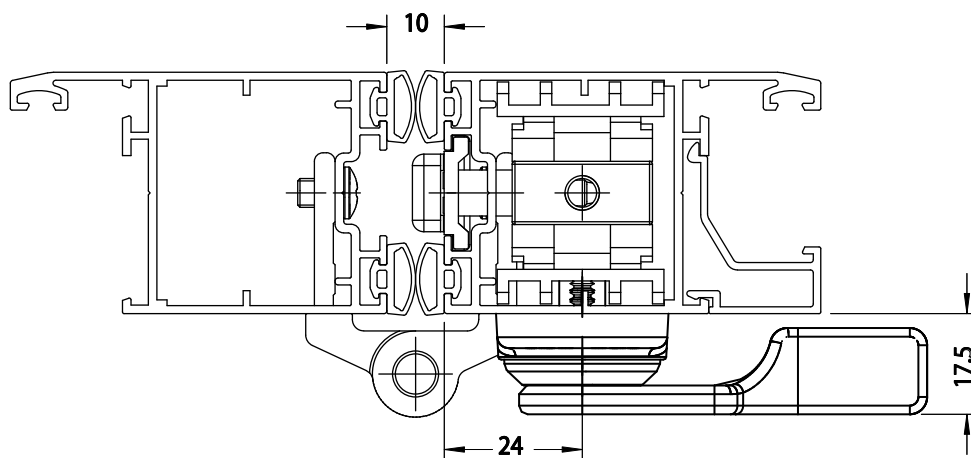
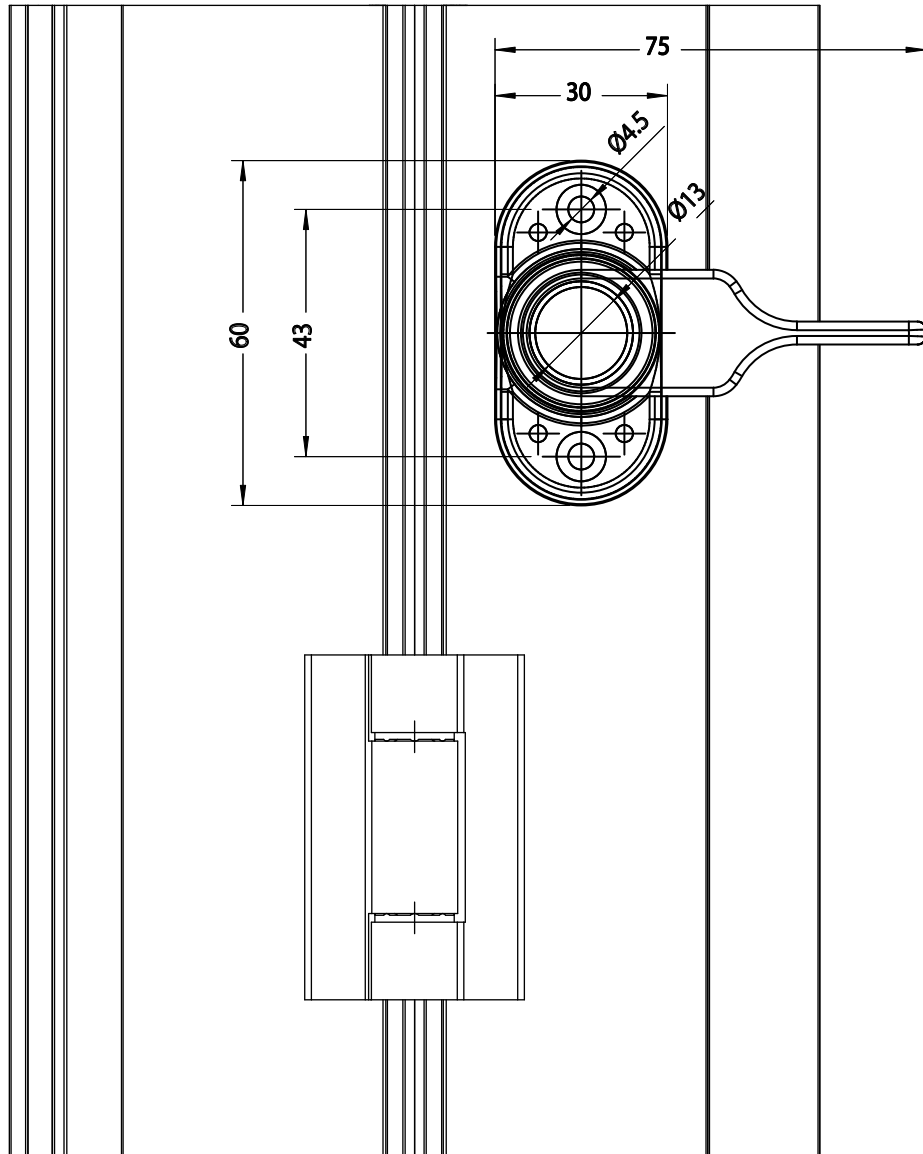




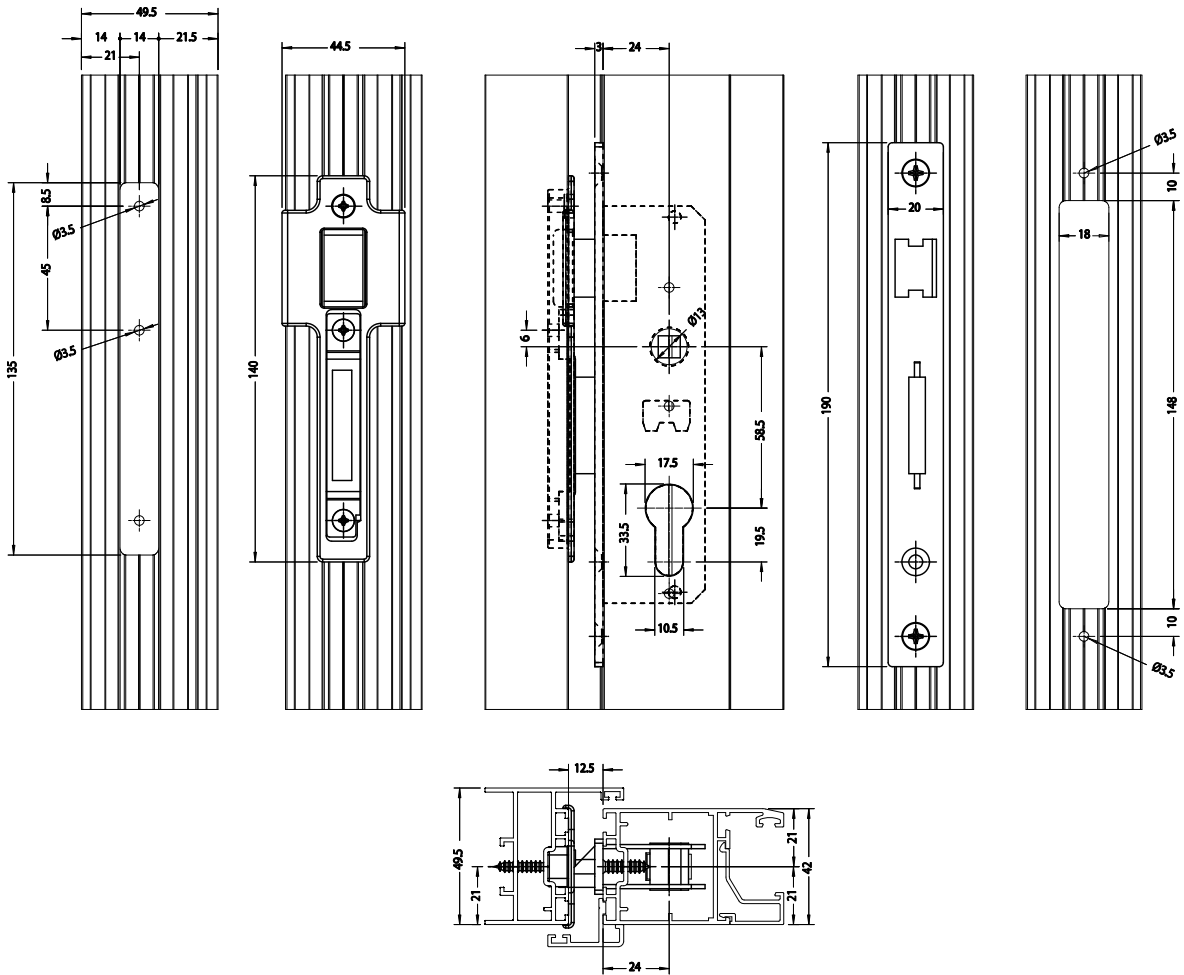
Ra 4408 Borchia copri cilindro



Ra 4407 Maniglia ribassata con perno da 42mm



# Ra 4400 Serratura



Ra 4406 Maniglia in alluminio con perno da 42mm

